



Tiles Galore

British transfer-printed tiles
1851-1901

#2 of 2 by Hans van Lemmen

Presented to the Transferware Collectors Club, October, 2017

Copperplate printed wall tiles



Decorative Art Tile Co. Pattern no. 85 registered in 1887

Block-printed wall tiles



Minton, Hollins & Co.. c. 1875



Robert Minton

Taylor, c. 1870

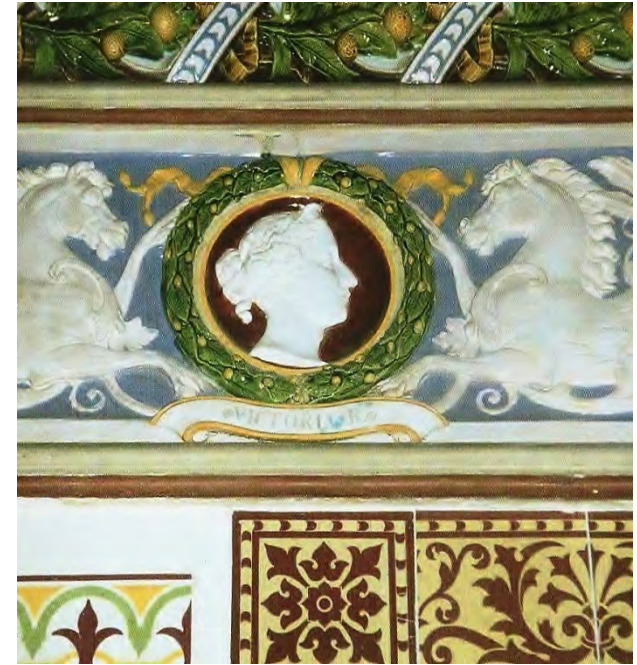
Tiles as fire-proof building material

STAIRCASES AND CORRIDORS,

(Building Act, 1855.)

In every public building and every other building containing more than 125,000 cubic feet, and used as a dwelling house for separate families, the floors of the lobbies, corridors, passages and landings, and also flights of stairs, shall be of stone or other fire-proof material, and carried on fireproof supports.

Tiles as a hygienic and easily cleaned building material



Royal Dairy at Frogmore, Windsor, 1858-61

Glazed faience and block-printed tiles by Minton, Hollins & Co. cover the walls



Grand Theatre in Leeds, 1878, with block-printed wall tiles by the firm W. Whetstone, Coalville, Leicestershire



Tiled porch in London with printed tiles by the Decorative Art Tile Co., Hanley, c. 1890



No. 1188. TILE No. T 1892.
 Sizes made .. 24 26 28 30 32 34 36 38 inches.
 Fires .. 12 14 16 18 20 22 24 26 28 ..
 Fine Cast Blacked, with Fret, and Tiles and Brick Back. } 29/- 29/- 30/6 31/6 32/6 33/6 34/- each.
 Ground and Blacked, add 3/6 .. Special Berlin Black, add 7/6 to Fine Cast.
 In the 24" and 26" sizes 3 in. Tiles are used and not the Pattern as drawn.
 If Gold Enriched add 2/-
 If No Fret less 1/-
 If Slow Combustion add 3/-
 If without Tiles less 8/-



No. 1810. TILE No. C 2006.
 Sizes made .. 30 32 34 36 38 inches.
 Fires .. 12 14 16 18 ..
 Berlin Black, 5th and Buffed Moulding, Gold enriched, with Fret, Chair Brick and Tiles 39/6 each
 Special Berlin Black add 2/-
 If Slow Combustion 3/-
 If Brass Knobs 2/-
 If without Tiles 25/-
 If without Fret 2/-

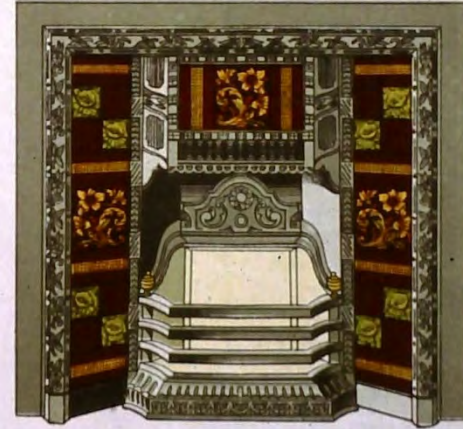
SUGGESTED CHEAP TILES FOR CHEAP TILE STOVES OPPOSITE.



Any other Tiles of the same size can be used in these Stoves, adding price given where they are shown, and deducting amount "If without Tiles."



No. 1261. TILE No. T 1834.
 Sizes made, 36 38 inch. Fires to all, 18 inch.
 Fine Cast with Fret and Blacked, and Tiles, Chair Brick 29/- each
 Ground Fret and Blacked 23/-
 Special Finish, Berlin Black
 If Gold Enriched add 2/-
 If with Solid Brick Back 2/-
 If with Spindle Bars and Brass Knobs 2/-
 If without Tiles less 8/-



No. 1074. TILE No. G.B.
 Sizes made, 36 38 40 inch. Fires in all cases, 18 inch.
 Fine Cast and Blacked as drawn 34/- each
 If Special Berlin Black add 9/-
 If Open Fire less 4/6
 If Fret only 2/-
 If without Tiles 8/-

Builders Merchants catalogue, c. 1895-1900

British manufacturers and their designers

FIRST CLASS & GOLD MEDALS.



MANUFACTORY & SHOW-ROOMS.

MINTON, HOLLINS, & CO.
PATENT TILE WORKS.
STOKE UPON TRENT.

LONDON HOUSE & SHOW ROOMS,

MINTON & CO.

50, CONDUIT STREET, REGENT STREET, W.

MANCHESTER HOUSE,

BRIDGEWATER CLUB CHAMBERS,

110, KING STREET.



Minton, Hollins & Co. Factory, Stoke, 1868-9



Aerial view of the Minton, Hollins & Co. factory



Minton, Hollins & Co. tile pattern books



Minton, Hollins & Co. tile pattern books

3 pattern books

2000+ designs actual size

66 series of picture tiles

50 single picture tiles

1870 first registered design

1886 last registered design



Copper plate printed



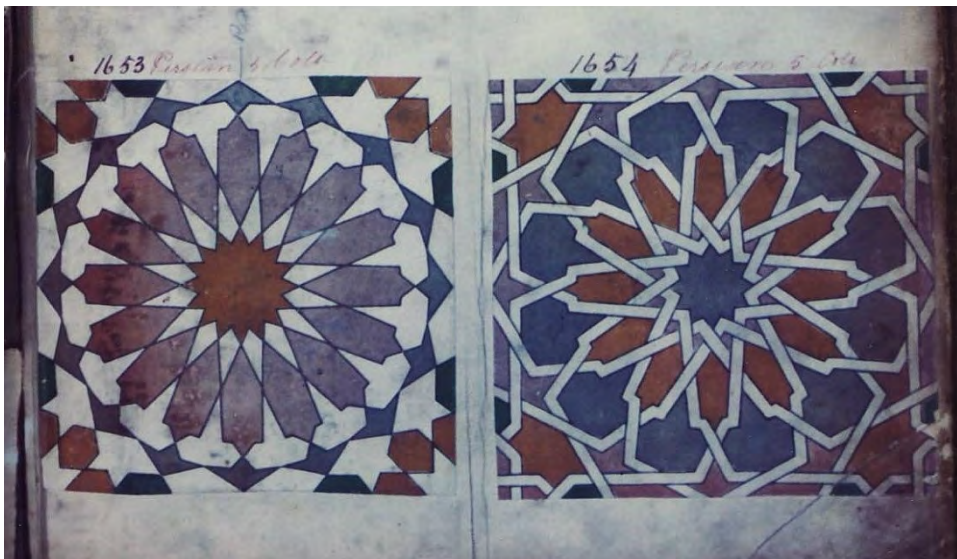
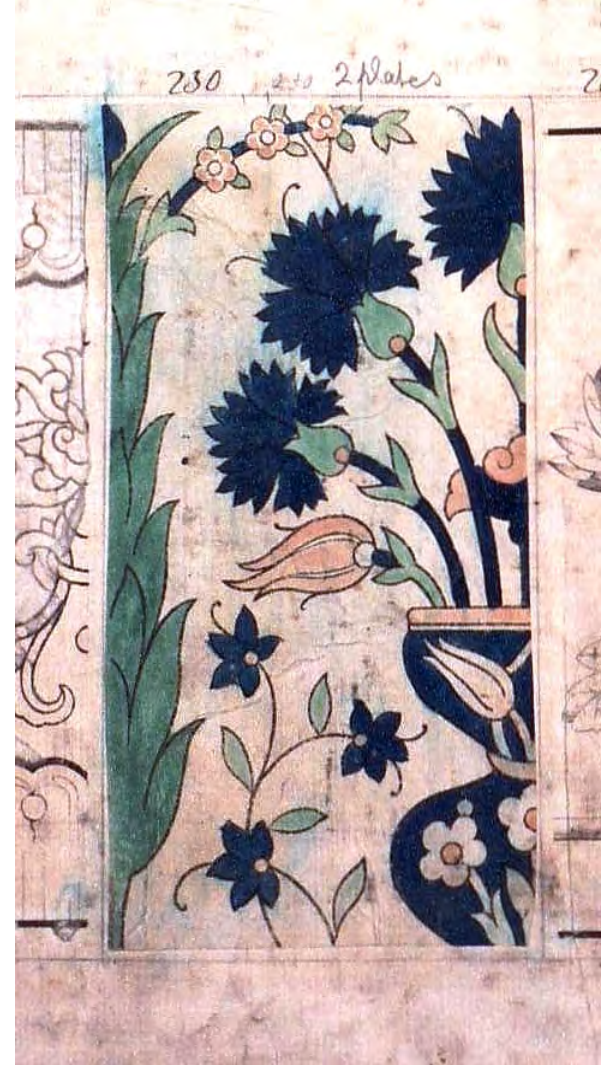
Block printed



Classical



Medieval



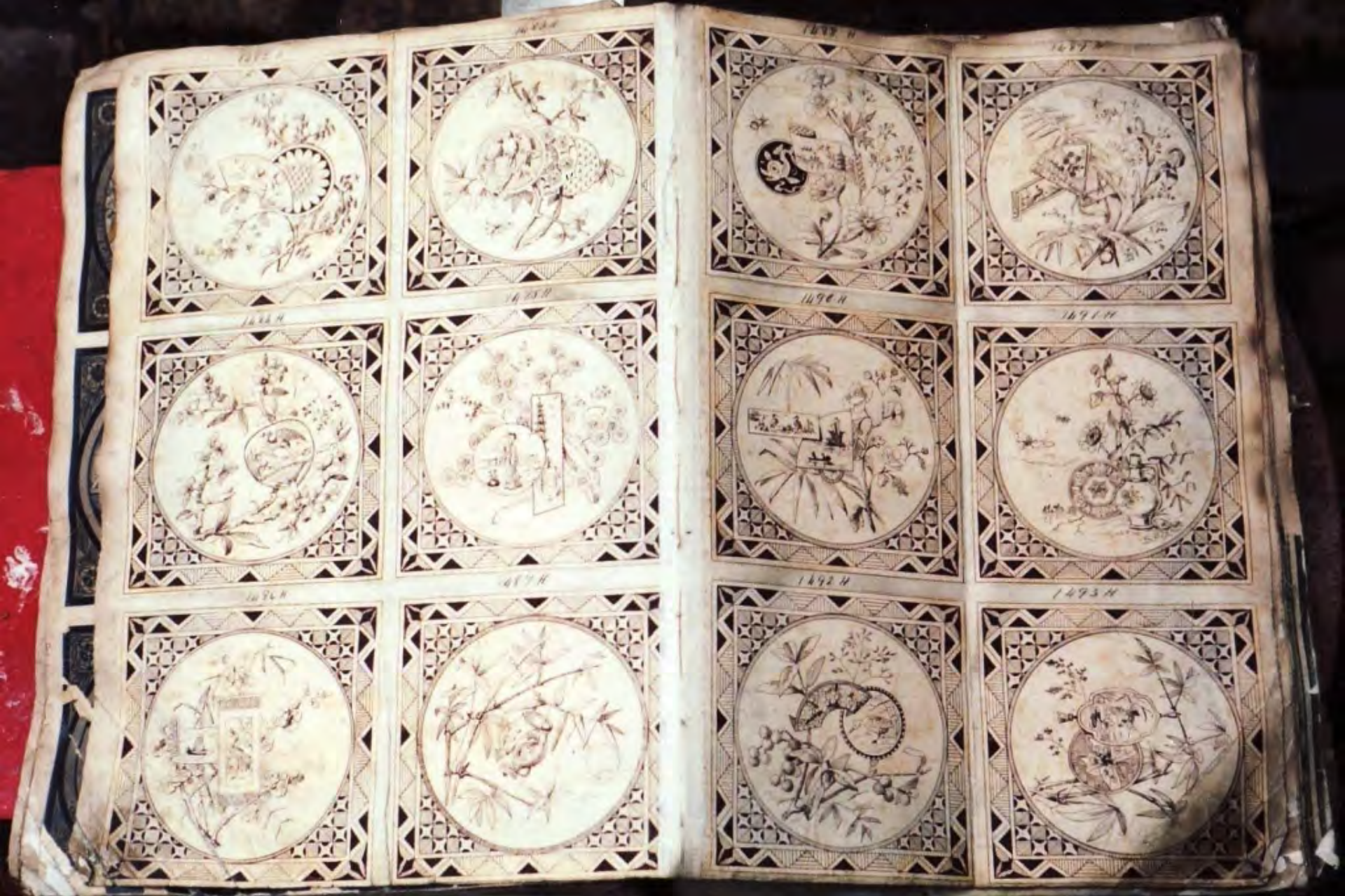
Islamic



Oriental



Dutch delftware themes



A series of twelve Aesthetic Movement inspired tile designs with fans, bamboo, blossom etc.



A series of twelve designs by John Moyr Smith with scenes from English history c. 1875

MINTON HOLLINS PICTURE TILES



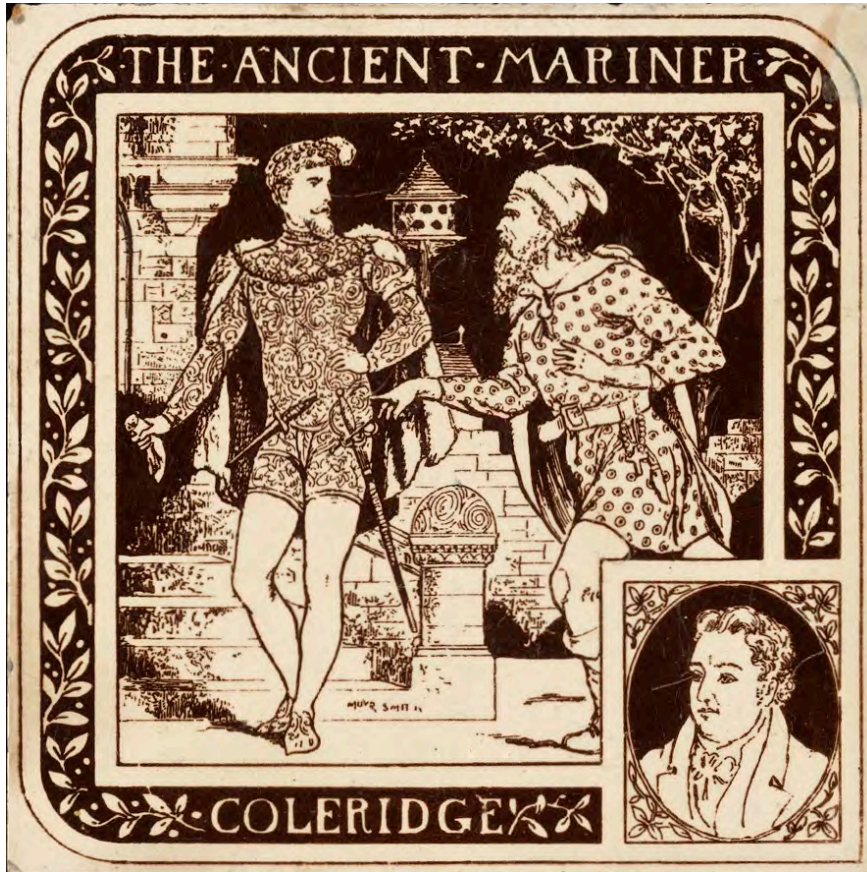
Hans van Lemmen

Gladstone Pottery Museum 1984

LIST OF SERIES

	page		page
Butterflies	6	Nursery Rhymes	23
Floral Seasons	6	Wild Flowers	23
Chinese Scenes	7	Birds	24
Land and Seascapes	7	Birds	24
Regency Children	8	Decorative Animals	25
Variety of Birds, Fables and a Hunting Scene	8	Classical Female Heads	25
Marine Subjects	9	Authors and their Works	26
Aesop's Fables	9	Shakespearean Songs	26
Wild Plants	10	Months of the Year	27
Birds	10	The Seasons	27
Birds	11	Day and Night	28
Venus and Adonis	11	The Arts	28
Times of Day	12	Country Scenes	29
Birds	12	Industrial and Domestic Labour	29
The Four Seasons	13	Female Heads	30
Humorous Hunting Scenes	13	English History	30
Biblical Scenes	14	Oriental Subjects	31
The Four Seasons	14	Pilgrim's Progress	31
Birds	15	Chinese Scenes	32
Arts and Sciences	15	Children, Animals and Landscapes	32
Aesop's Fables	16	Months with Signs of the Zodiac	33
Birds	16	Animals	33
The Seven Ages	17	Trades and Occupations	34
Humorous Sporting Scenes	17	Hunting and Racing Scenes	34
Shakespearean Scenes	18	Farm Animals	35
Quartered tiles with various subjects	18	Allegorical Figures	35
The Road to Ruin	19	Wild Flowers and Birds	36
Months of the Year	19	Farm and Country Animals	36
The Seasons	20	Warriors on Horseback	37
Underwater Scenes	20	Pigs	37
Animals	21	Birds	38
Birds	21	River Scenes	38
Signs of the Zodiac	22		
Birds	22		

MINTON, HOLLINS & CO, PICTURE TILES



Tile Series: **Authors and their Works (12)**

Nos. 1340H - 1351H

Designer: Moyr Smith

Registered:

Size: 8x8 inches

List of Subjects

- 1340H 'BURNS - THE JOLLY BEGGARS'
- 1341H 'SHELLEY - THE WITCH OF ATLAS' (MT p.34)
- 1342H 'GOETHE - WALPURGIS NIGHT'
- 1343H 'CHAUCER - PATIENT GRISELDA'
- 1344H 'MILTON - COMUS AND THE LADY'
- 1345H 'VIRGIL - AENEAS AND DIDO'
- 1346H 'BYRON - SARDANAPALUS' (L p.123)
- 1347H 'DANTE - FRANCESCA'
- 1348H 'SPENSER - UNA AND THE SATYRS' (L p.123)
- 1349H 'HOMER - ODYSSEUS AND THE SYRENS'
- 1350H 'COLERIDGE - THE ANCIENT MARINER' (A p.54)(L p.148)
- 1351H 'SCOTT - THE DEATH OF MARMION'

Tile Series: **Shakespearean Songs (12)**

Nos. 1352H - 1363H

Designer: Moyr Smith

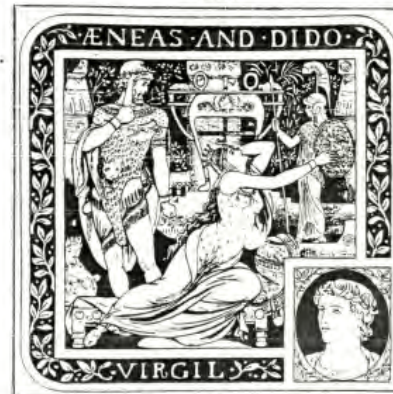
Registered:

Size: 8x8 inches

List of Subjects

- 1352H 'UNTO THESE YELLOW SANDS' The Tempest Act IV
- 1353H 'LAWN AS WHITE AS DRIVEN SNOW' The Winter's Tale Act IV
- 1354H 'SIGH NO MORE LADIES' Much Ado About Nothing Act II
- 1355H 'UNDER THE GREENWOOD TREE' As You Like It Act II
- 1356H 'MISTRESS MINE WHERE ARE YOU ROAMING' The Twelfth Night Act II
- 1357H 'AND LET ME THE CANAKIN CLINK' Othello Act II
- 1358H 'BLOW THOU WINTER WIND' As You Like It Act II
- 1359H 'BLACK SPIRITS AND WHITE' Macbeth Act IV
- 1360H 'ORPHEUS WITH HIS LUTE' King Henry VIII Act III
- 1361H 'HARK HARK THE LARK' Cymbeline Act II
- 1362H 'TAKE THESE LIPS AWAY' Measure for Measure Act IV
- 1363H 'WHO IS SYLVIA WHAT IS SHE' Two Gentleman of Verona Act IV (L p.123)(MT p.34)

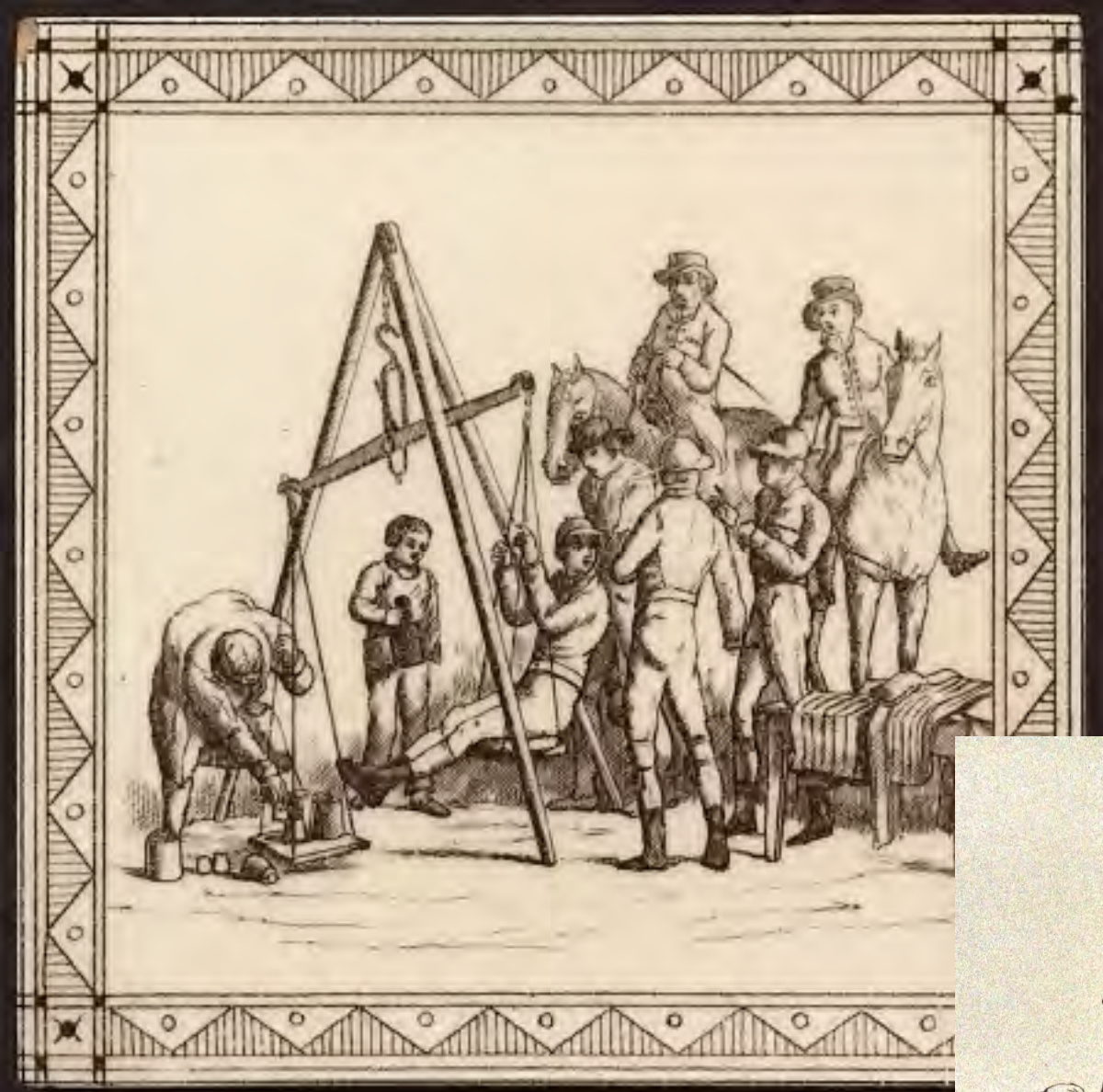
1345H



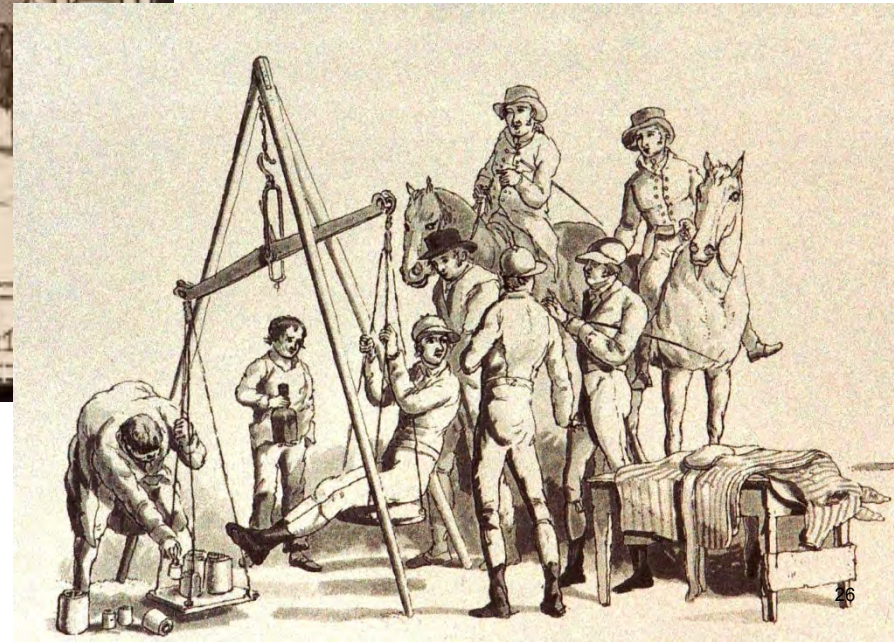


Tile design from a series of 12 fables in the Minton Hollins pattern book showing the story of *The Sun and the Frogs* based on illustrations by the French artist Gustave Doré for the fables of La Fontaine published in 1868





Minton Hollins tile showing *Weighing the Jockey* from a series of 12 hunting and racing scenes some of which some are based on aquatints in W.H. Pyne's 'Microcosm' of 1808



MINTONS TILES.

SELECTED PATTERNS OF ENAMELLED TILES,

FOR
WALLS, HEARTHES, FIRE PLACES, FURNITURE, FLOWER BOXES, &c.,
REDUCED TO A SCALE OF 1½ INCH TO A FOOT.

Full-sized Prints of any particular Patterns that may be required
will be sent on application to

MINTONS
(LIMITED),
CHINA WORKS,
STOKE-UPON-TRENT,
OR THEIR
LONDON WAREHOUSE, 28, WALBROOK,
(OPPOSITE CANNON STREET STATION.)

THIS BOOK OF PATTERNS IS ENTERED AT STATIONERS' HALL.

(LIMITED)—CHINA WORKS: STOKE-UPON-TRENT, AND 28, WALBROOK, LONDON.

TILES RICHLY GLAZED AND DECORATED WITH ENAMELS,
FOR HEARTHES, FURNITURE, FRIEZES, WALLS, AND OTHER ARCHITECTURAL DECORATION, FLOWER-BOXES, &c.



Scale: 1 2 3 4 5 6 7 8 9 10 11 12 INCHES. 1½ In. to a foot.

MINTONS (LIMITED) CHINA WORKS, STOKE-UPON-TRENT.

N.B.—Nos. 1416, 1407, 1428, 1430, 1415, are also made to run horizontally.

John Moyr Smith



From the Shakespeare series (24) c. 1874



From the Fairy Tales series (12) c. 1873

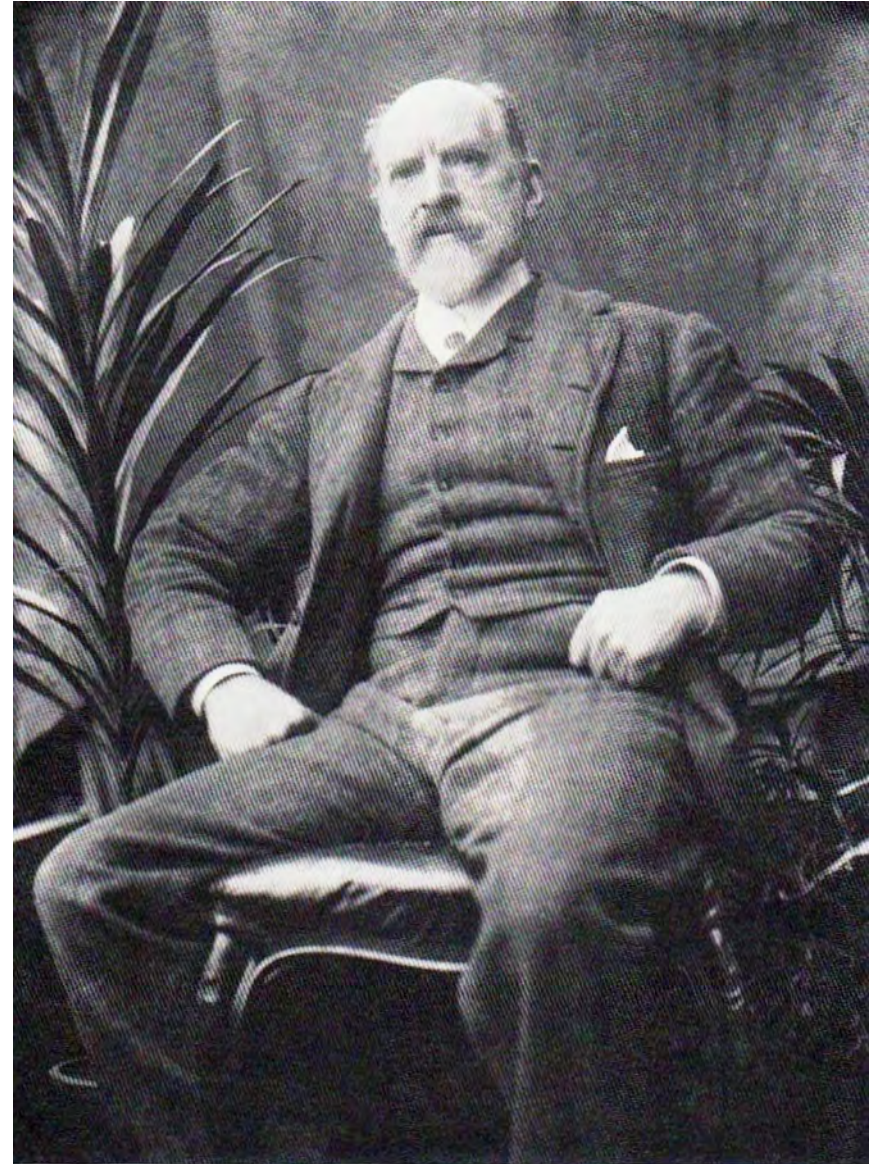


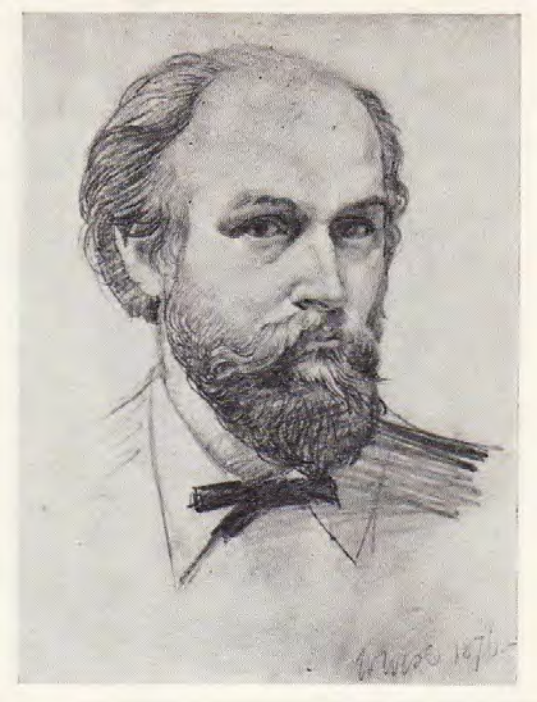
fig. 1. John Moyr Smith c.1896, photographed by George Ferguson Junior.



From The Husbandry series (12) c. 1875



From Tennyson's Idylls of the King series (12) c. 1876



William Wise self portrait, c. 1876



From the Rustic Scenes series c. 1878



The life-class, sketched by Wise in 1871, towards the end of his student days. Private Collection





Detail of an 8 inch tile
executed as a 'print and
tint' design

L. T. Swetnam



'Westgate in Warwick' from a series of 12 British scenes c. 1885
1977



Tile found in a derelict house in Leeds in

Dear Sir

Thank you for your letter of the 4th May, addressed to the Director of Housing.

The Department is pleased to grant you continuing permission which will enable you to obtain any material of architectural interest from dwellings within a confirmed Clearance Area.

I have forwarded a copy of this letter to Mr Healey, Demolition Superintendent.

Yours faithfully

BH G. Jones





Sketches made in the early 1870s (Minton archives)

Christopher Dresser visited Japan in 1866-7



Flower pot late Edo period (1860-62)





Queen Victoria's Golden Jubilee commemorative tile 1887 (Potteries Museum & Art Gallery, Hanley)



Mintons China Works (1893)

Glazed and Decorated with Enamels.

EXTRA THICK BODY FOR HEARTHES, AND ON THE ORDINARY

purpose should be stated when ordering.

No. 2659. G. 6in. by 6 in.



No. 267a G. 6in. by 6in.



No. 2684 G. 6in. by 6in.



From 1884 consecutive numbers were used. They are nearly always prefixed by Rd or Rd No. A guide to the year from the number is given below:

Rd No	1 - 1884	163767 - 1891	311658 - 1898	447000 - 1905*
	19754 - 1885	185713 - 1892	331707 - 1899	471000 - 1906*
	40480 - 1886	205240 - 1893	351202 - 1900	494000 - 1907*
	64520 - 1887	224720 - 1894	368154 - 1901	519000 - 1908*
	90483 - 1888	246975 - 1895	385500 - 1902*	550000 - 1909*
	116648 - 1889	268393 - 1896	402500 - 1903*	
	141273 - 1890	291241 - 1897	420000 - 1904*	

*Approximate only

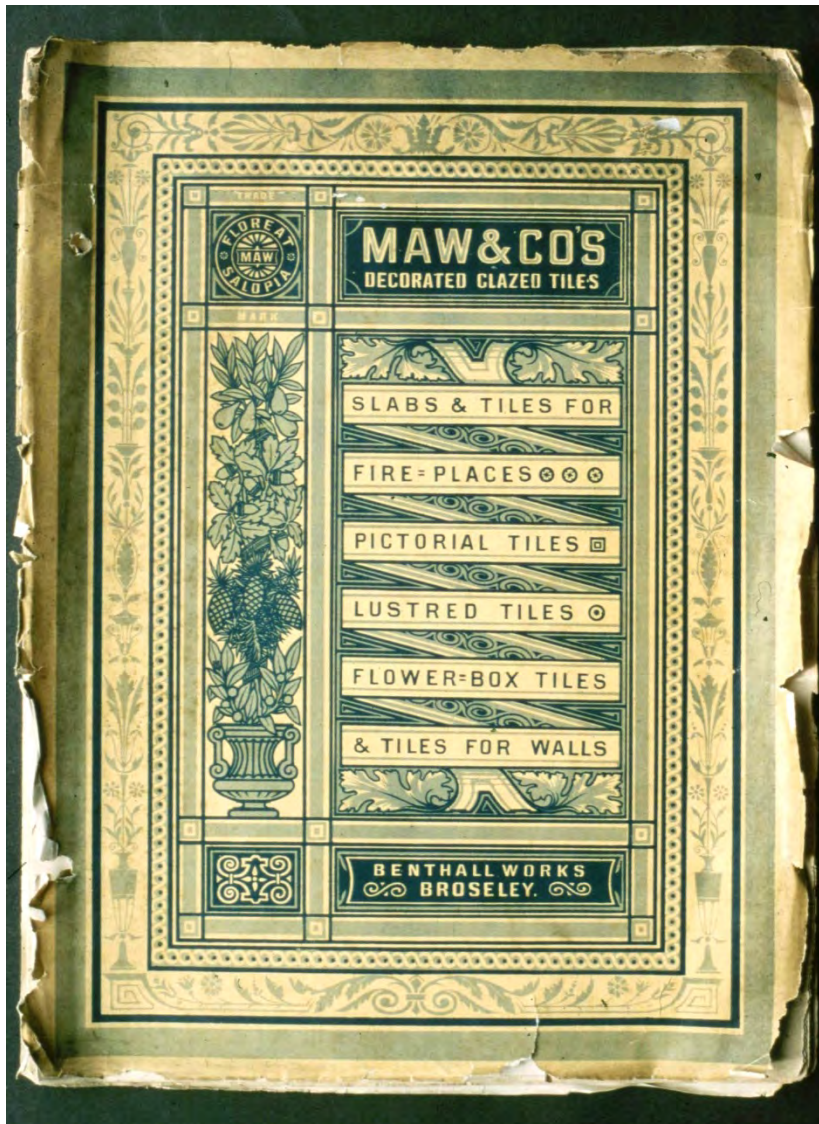


Various kinds of information on the back of a tile

MAW & CO BENTHALL WORKS
WORCESTER • 1850 • BENTHALL • 1852 • REBUILT • 1883

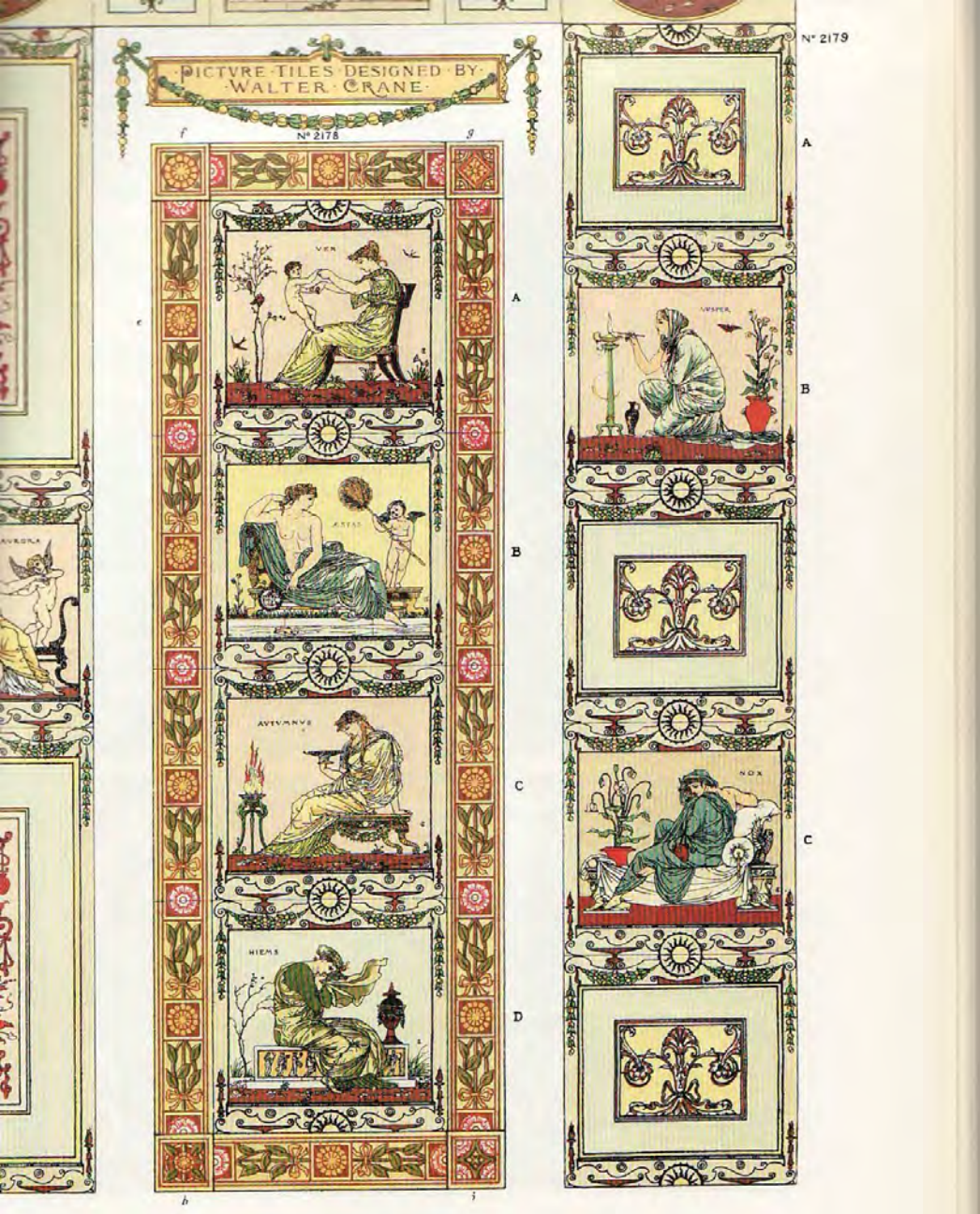


Entrance of the Maw & Co. tile works at Jackfield designed by Charles Lynam and opened in 1883



Maw & Co. tile catalogue, c. 1880

PICTURE-TILES DESIGNED BY WALTER CRANE

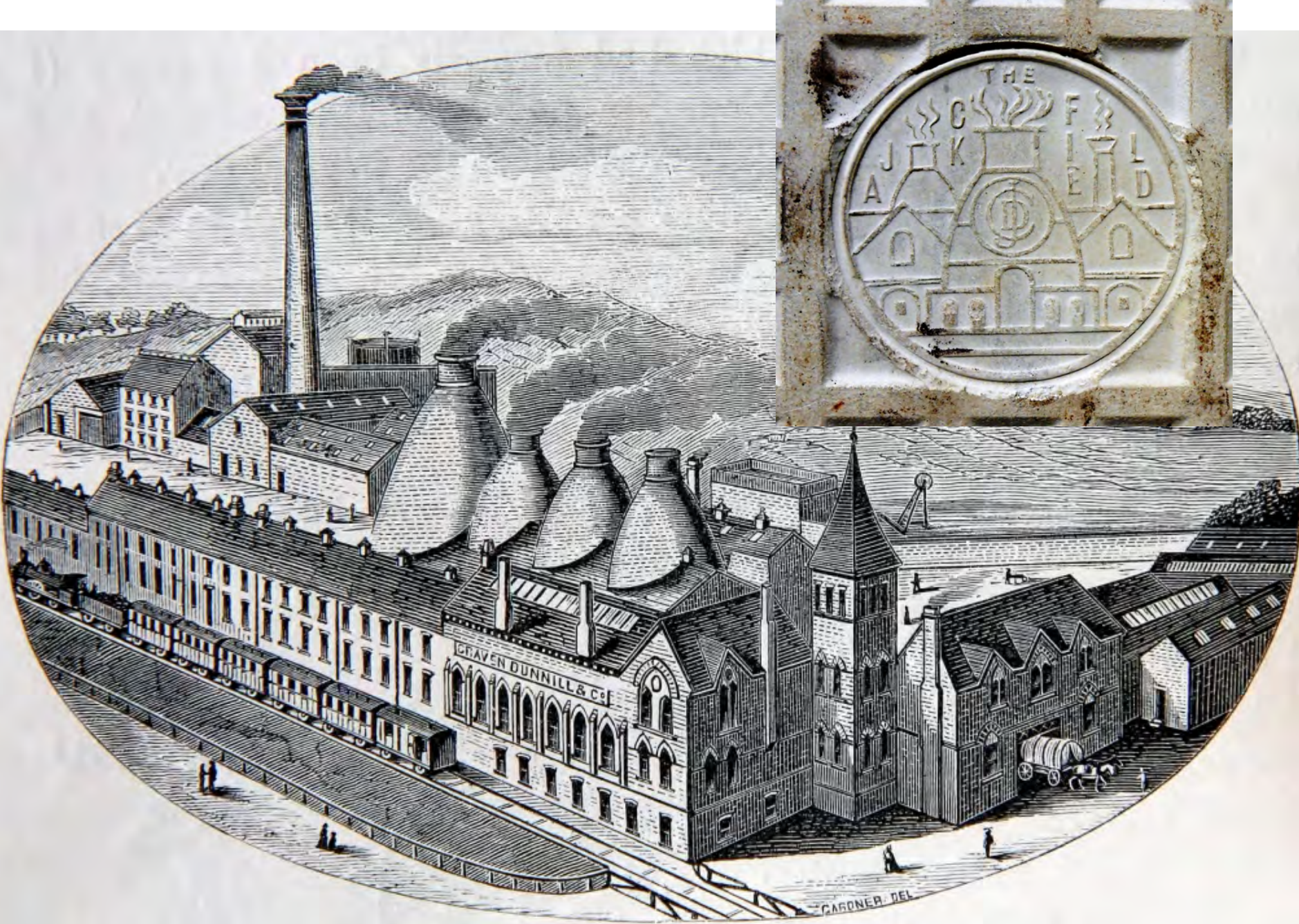


Walter Crane designs (1878) for Maw & Co. with Roman personifications of *The Seasons* and the *Times of Day* executed as transfer printed designs with colours added by hand



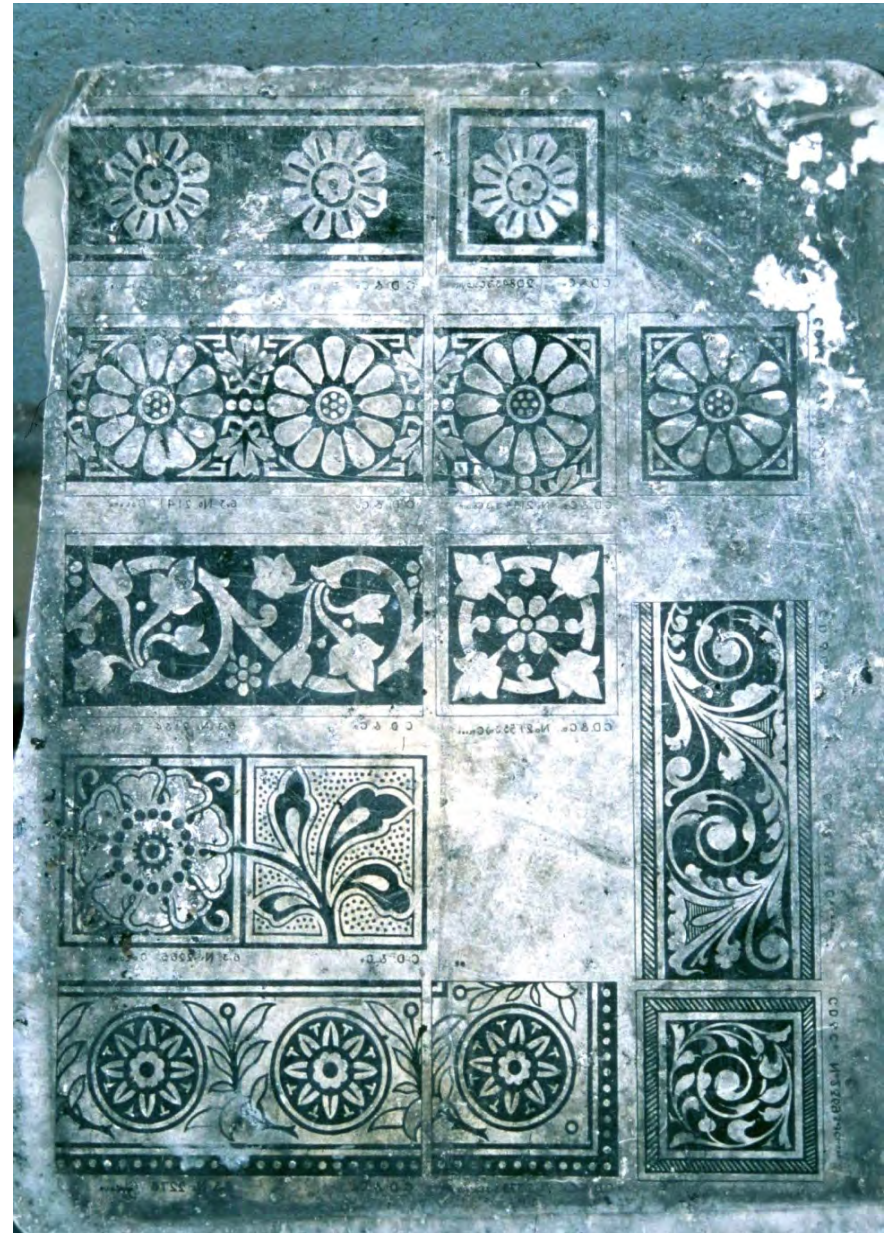


Owen Gibbons *Geisha Girls* series, 1885



Engraving of the Craven Dunnill tile works at Jackfield from L. Jewitt, *Ceramic Art of Great Britain*, 1878

Lithographic stone with tile designs c. 1890 (from the Craven Dunnill tile works) with matching tile printed in blue





Lithographically printed



Transfer print from a copper plate





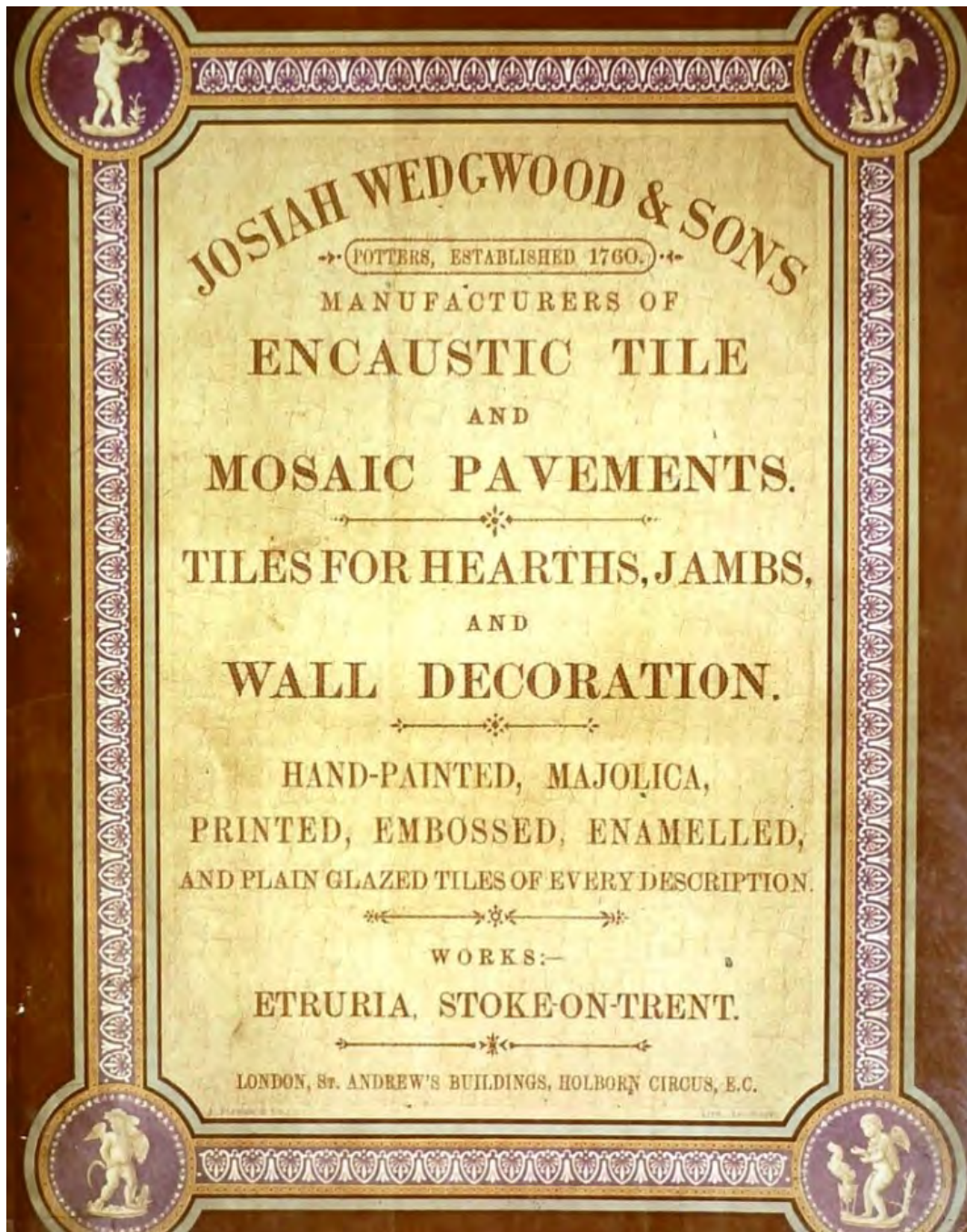
From the Medieval
Occupations
series, c. 1878



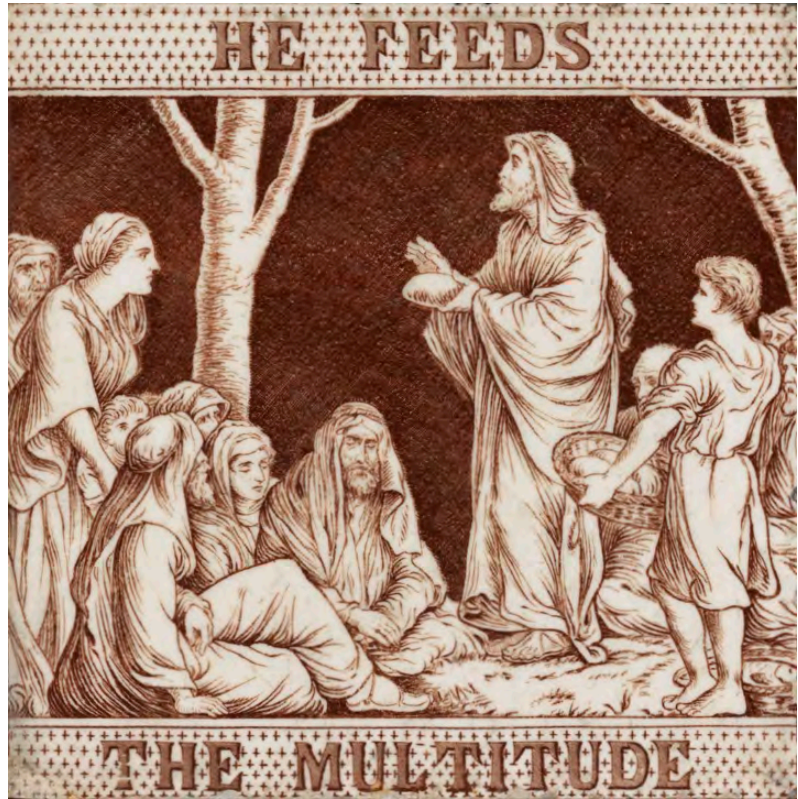
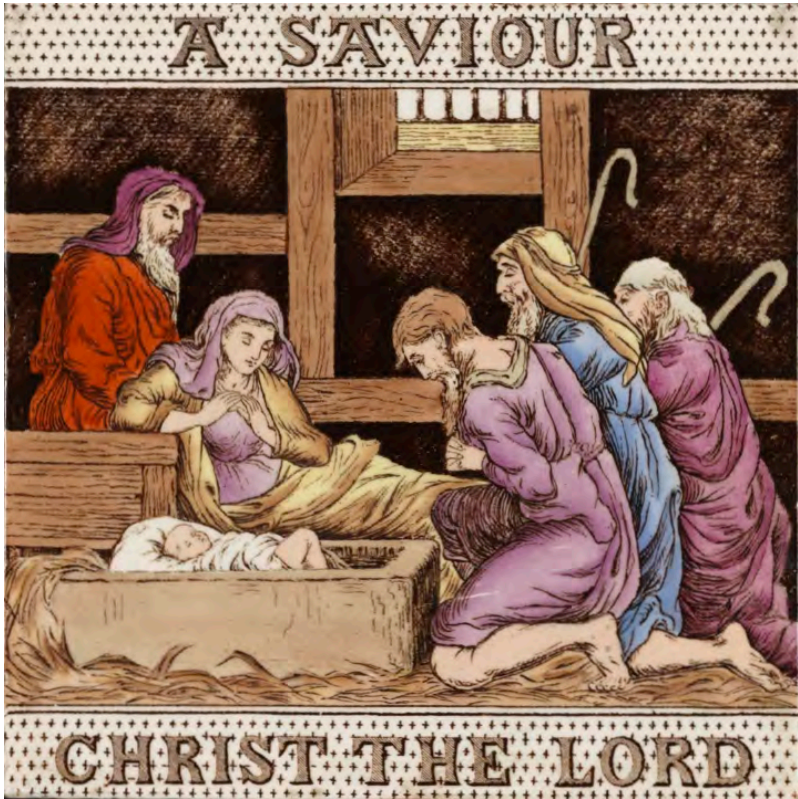
From the
Medieval
Musicians
series, c.
1878



A Spode's clay cellar converted to a wine cellar (with acknowledgements to Pam Wooliscroft)



Wedgwood tile
catalogue c. 1880



From a series of 20 illustrating the life of Jesus



From *The Months* series by Helen J. Miles
Game series



From *The*

Thomas Allen



Wedgwood's *Greek Musicians* series c.
1878 used on plates and tiles

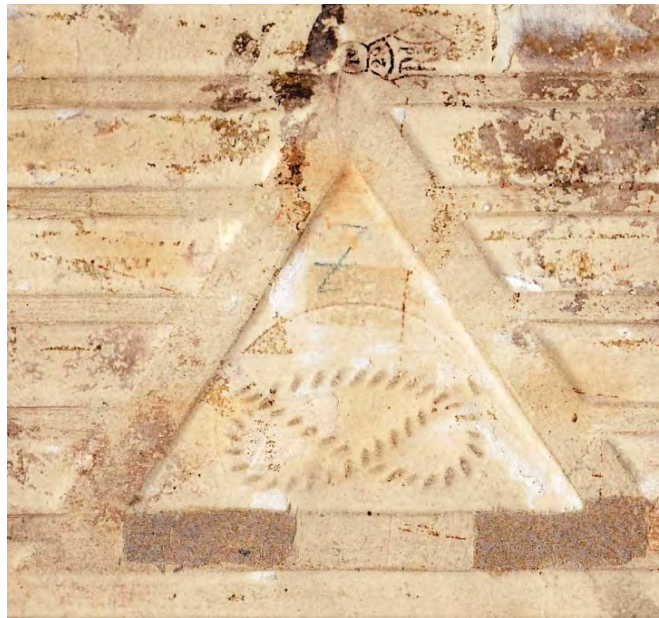




Albert Moore, *A Quartet* (1868) and a Thomas Allen tile 'inspired' by the painting?

Sherwin & Cotton 1877-1911

Based in Hanley, Staffordshire

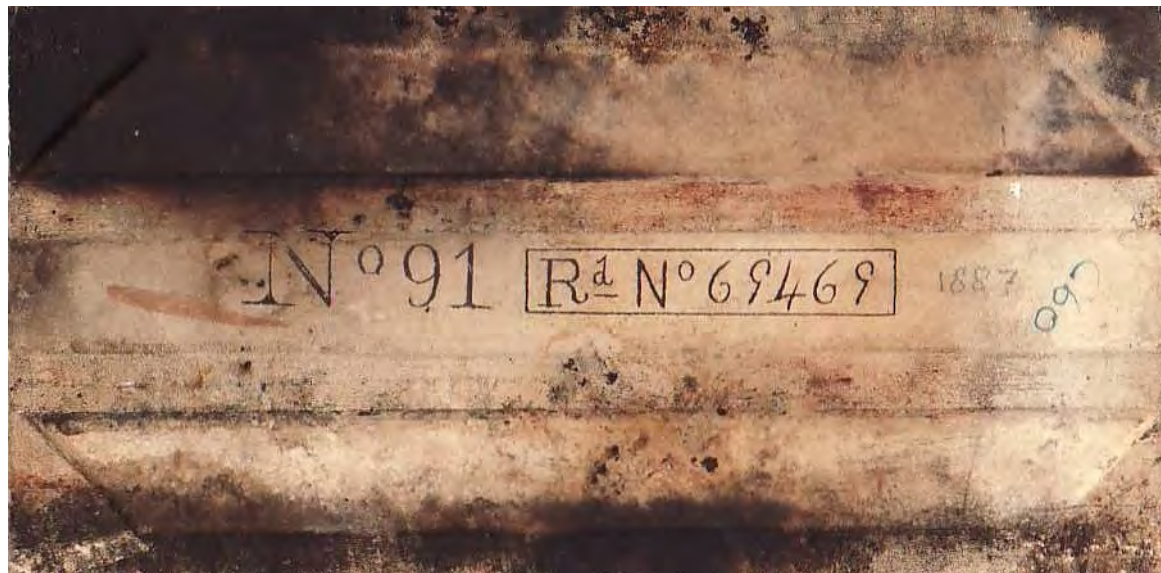
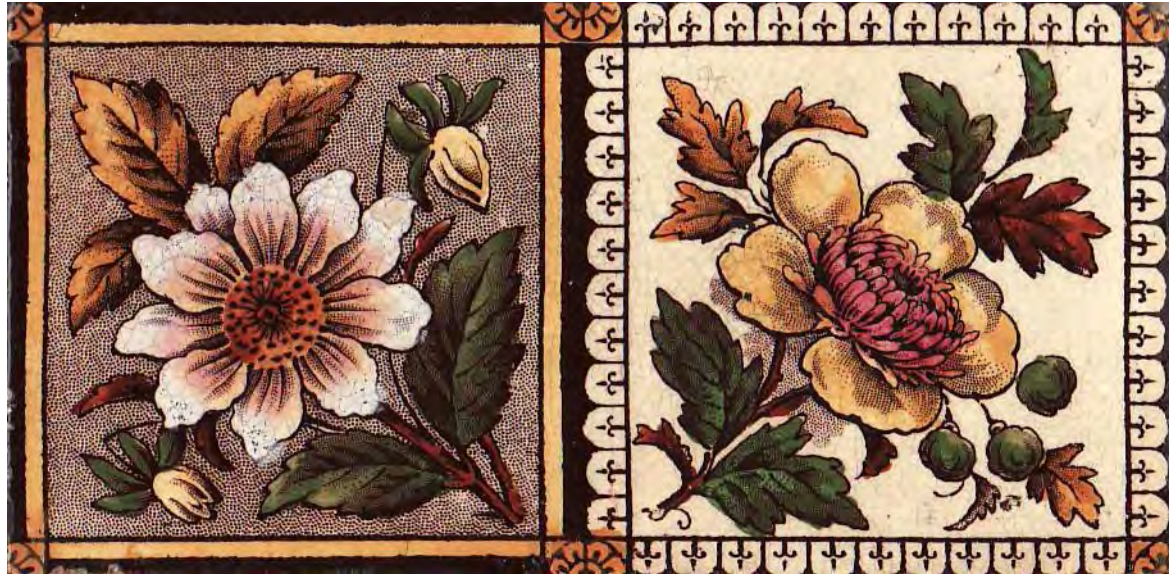




Sherwin & Cotton print and tint tiles c. 1880

Decorative Art Tile Company 1881-1906

Based in Hanley, Staffordshire.



Design no. 91 registered in 1887

N^o A2

R $\frac{1}{11}$ N^o 69700



N^o A3



Decorative Art Tile Co. pattern book (V&A London)

Naturalistic flowers



Arum lilies



Azaleas

Before MR. JUSTICE MANISTY.

February 17th, 18th. and 19th, 1887.

SHERWOOD AND COTTON v. DECORATIVE ART TILE COMPANY.

Registered design—Action for application without consent of proprietor—Obvious imitation—Fraudulent imitation—Patents, &c., Act, 1883, s. 58—Costs

The registered Proprietors of the copyright in a design for a tile, brought an action for infringement thereof under Section 58 of the Patents Designs and Trade Marks Act, 1883. The Defendants' tile, of which the Plaintiffs complained, although resembling the Plaintiffs' registered design in most respects, differed from it in many details. The Plaintiffs proved purchasing 100 tiles from the Defendants.

Held (1) that the Defendants' tiles were not an obvious imitation of the Plaintiffs' registered design; (2) that the Defendants' tiles were a fraudulent imitation of the Plaintiffs' registered design; (3) that the Defendants must pay £50 to the Plaintiffs; (4) that the Defendants must pay two thirds of the Plaintiffs' costs, but not the whole, because evidence had been given for the Plaintiffs which the Judge thought ought not to have been given.

Functional applications of transfer-printed tiles

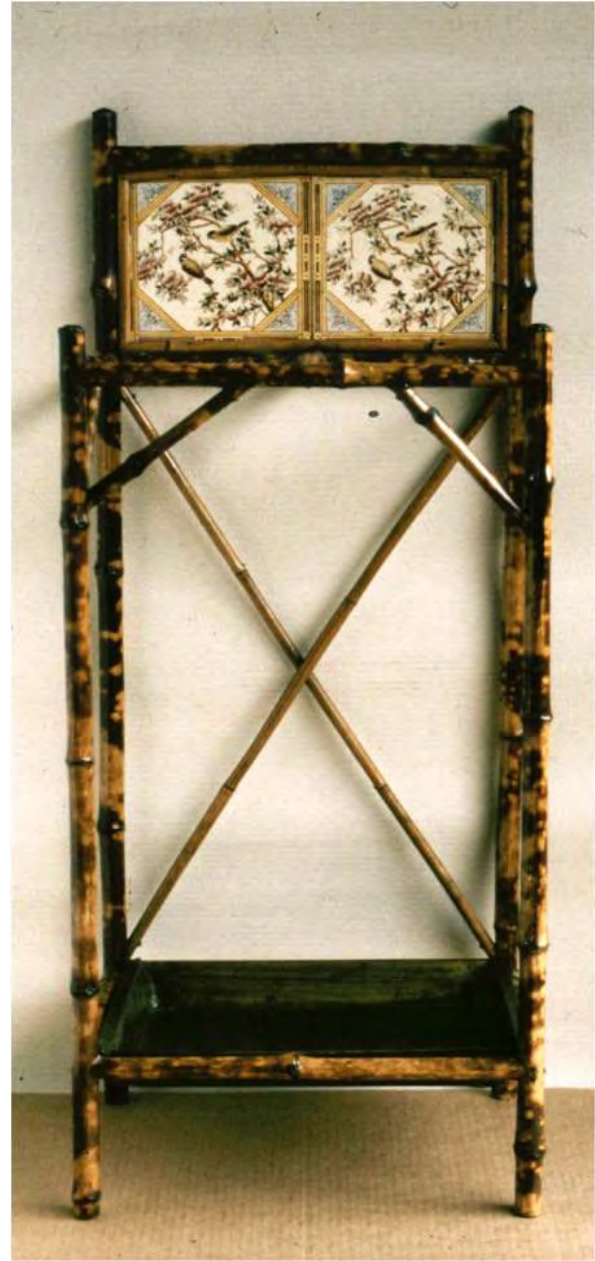


Transfer-printed tiles by the firm Jackson Brothers in the porch of a Victorian house in London, c. 1890



Tiled porch in Hull, c. 1900 -1905





Victorian tiled hallway furniture



Victorian wash-basin with a tiled splash-back of Mintons China Works tiles designed by John Moyr Smith with scenes from the Waverley Novels (Mill Owner's House at the Industrial Museum in Bradford)



Washstand with Mintons China Works tiles depicting the days of the week designed by Elizabeth Ellen Houghton





Victorian drawing room in the Mill Owner's House at the Industrial Museum in Bradford



Cast iron grate with transfer-printed tiles

- fireproof
- easily cleaned
- reflects heat
- decorative





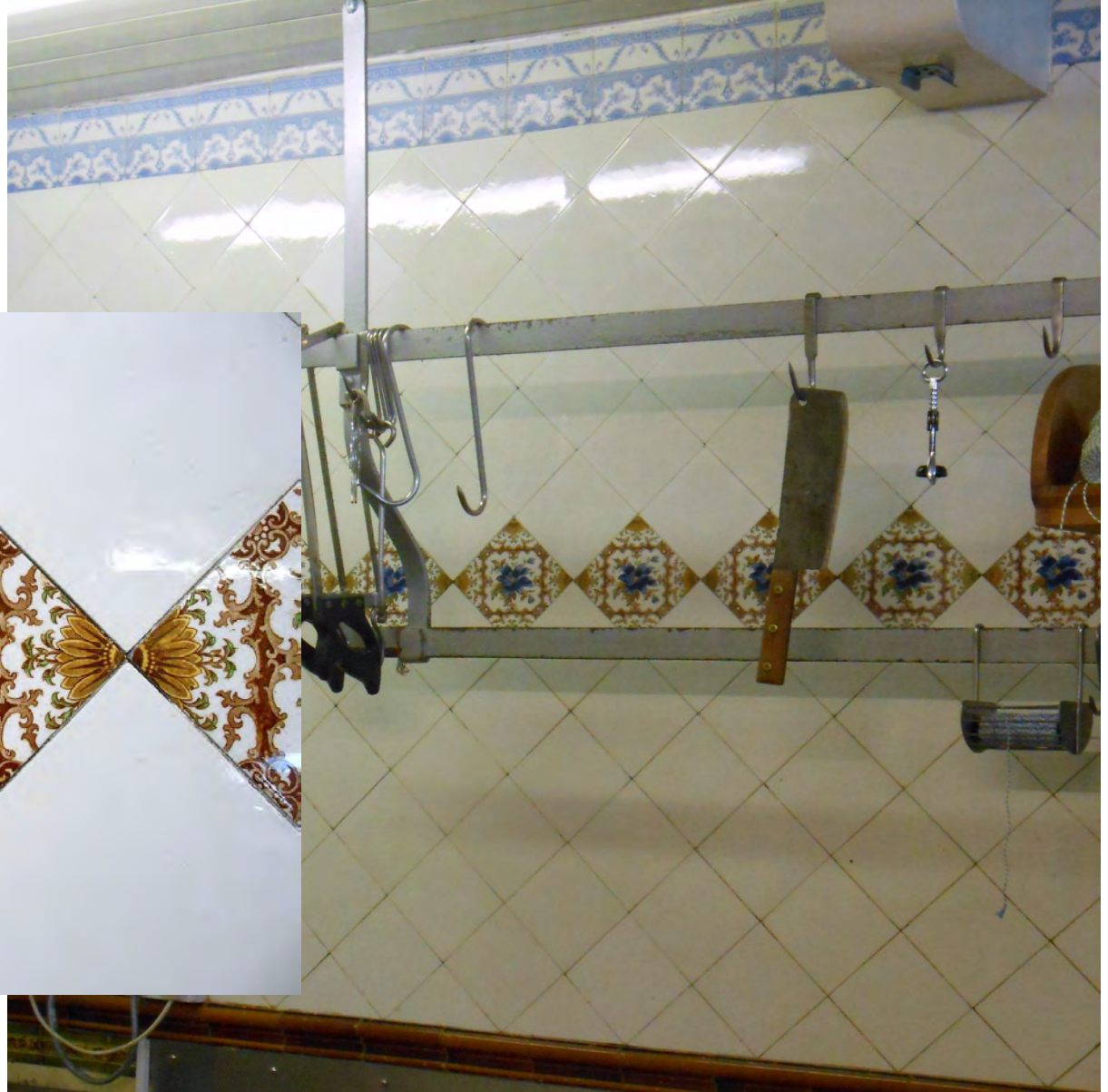
Cast-iron stove with
Mintons China
Works tiles
designed by John
Moyr Smith
showing scenes
from the Waverley
Novels.,
c. 1890



Reconstructed Butcher's shop with Mintons China Works tiles at the Gladstone Pottery Museum in Longton



Butcher's shop, Headingley, Leeds, c. 1890 (demolished) with a Mintons China Works tile by William Wise

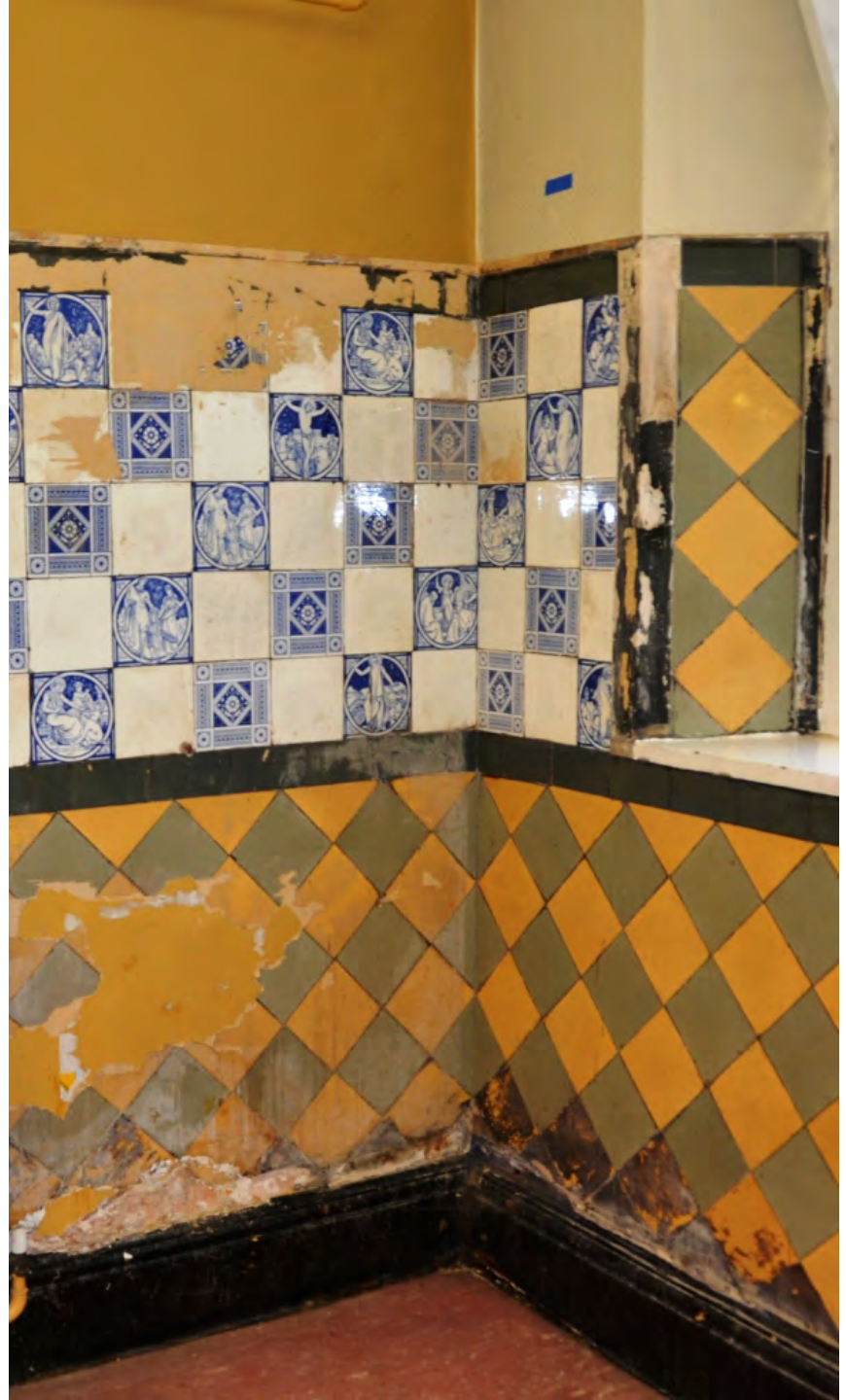


Butcher's shop, Roman Road, Roundhay, Leeds, c. 1900





Minton Free Library, London Road, Stoke, designed by Charles Lynam, 1878

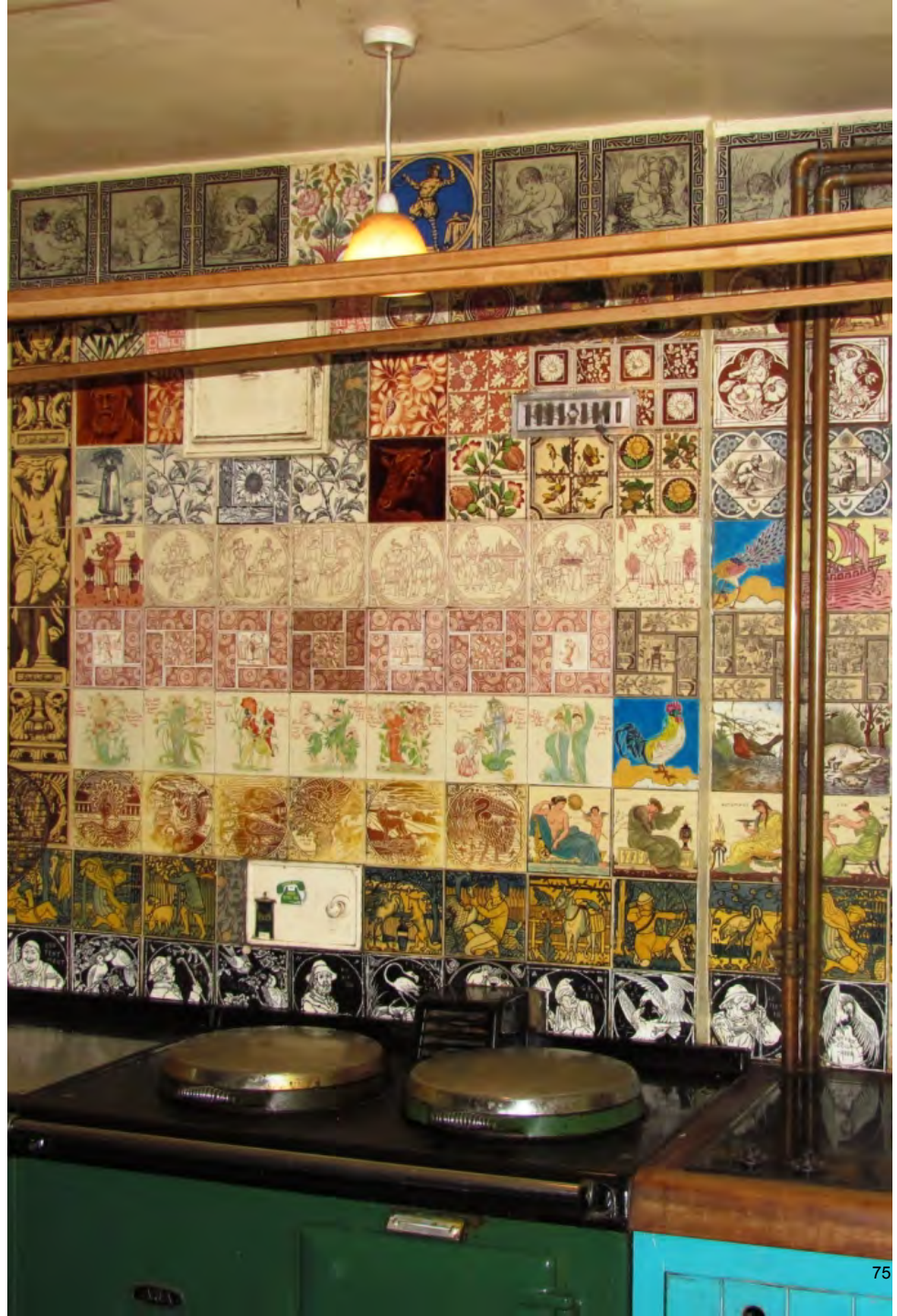


Block-printed pictorial tiles with scenes from the life of Jesus designed by John Moyr Smith

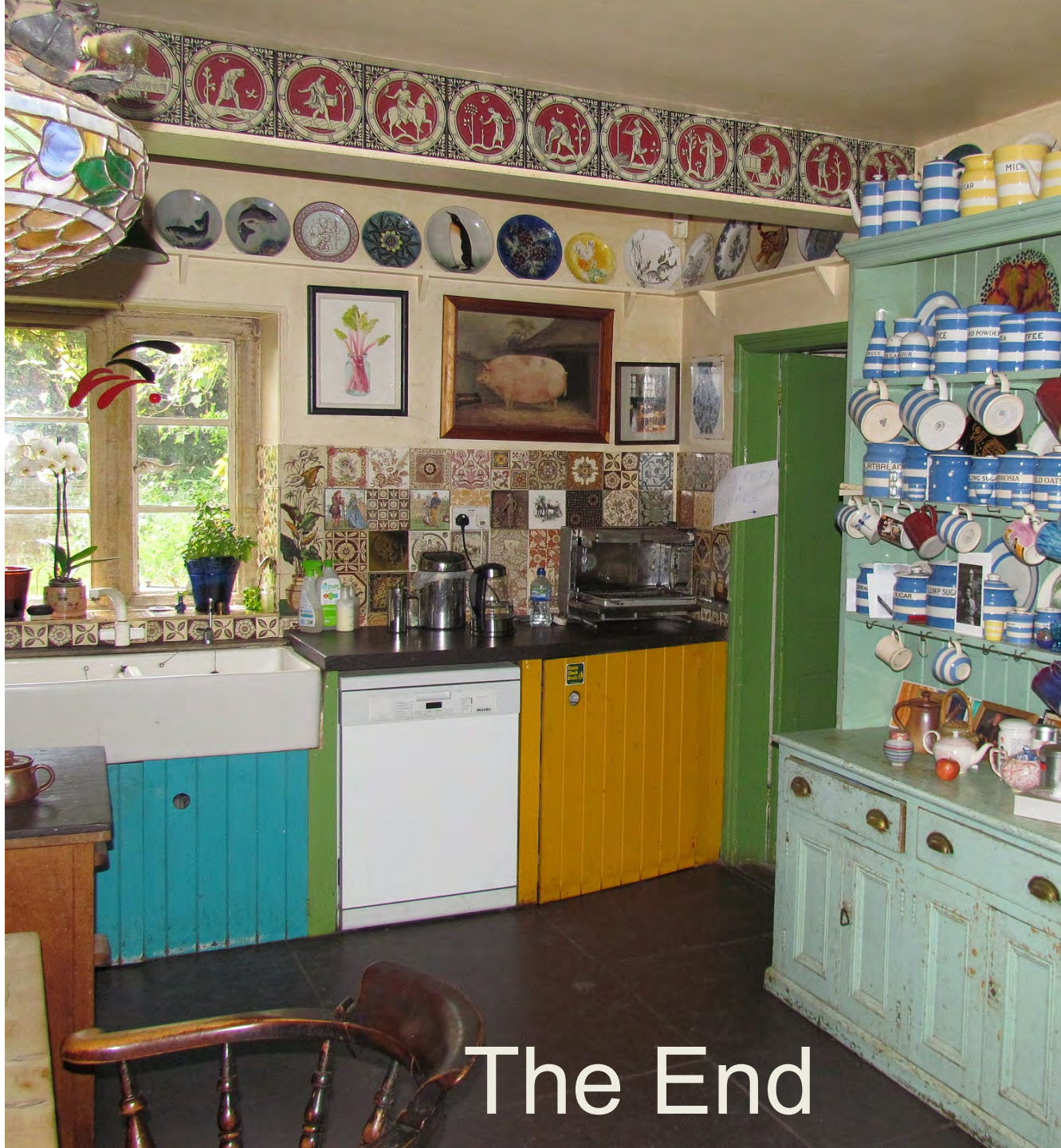




Small shop in Broseley near Ironbridge with walls covered with left-over transfer-printed tiles from the Maw and Craven Dunnill factories



The home of the publisher and antique dealer Richard Dennis . The kitchen walls are covered with transfer printed tiles of the period 1870-1900



The End