

# Voices From the Past

## Articles, Letters, Sales Lists and Auction Results from 1890 to the Present

### Laidacker at The White Plains Antiques Show Circa 1930's

Below: Sam Laidacker's booth identified on the reverse as "1930's". The poplar or pine cupboard is surrounded by small folio Currier and Ives prints and is covered by various historical flasks. The cupboard contains Historical Staffordshire. The top shelf has **The Headwaters of the Juniata** 10" d soup, **West Point** 17" platter, **Catskill Mountain House** 10" soup, a **Sower** coffee pot, all by Adams. The middle shelf has a **Revelation** plate, a **Landing of the Fathers** plate, a rare **Highland Hudson River** 13" platter and a **Castle Garden** cup plate, all by Wood. There is a 9" **Quebec** by Davenport and a small **States** plate by Clews. The lower shelf has four 10" plates, two **States** by Clews and a **View of Liverpool** and a **Macs Victory**, both by Wood. This shelf also contains an irregular shell gravy boat and an oval dish with an English view from Stevenson's **Panoramic Scenery** series.



Above: A massive number of 10" d plates. We have identified the following views: **City Hall, NY**, **Macs Victory**, **Fairmount**, **The Valentine**, **Capital Washington**, **Ermenonville**, **Troy/Union Line**, **Hospital Boston**, **Landing of Lafayette**, **Faulkborne Hall**, **B&O Level** and **Beach at Brighton**. The large platters are **Lake George**, **Chrtiansburg**, **Niagara from the American Side** and a **Fruit and Flower** example with a **Castle**. There is a **Liverpool** plate with **The Seal of the United States** and another with a **ship transfer**. The **blanket chest** along the side wall holds an irregular shell **gravy tureen**, while the table in the foreground has three **Adams** plates from the **U.S.** series and a **Penns Treaty** plate. The table on the left side of the booth has a **Lacy** compote, plus a selection of **glass cup plates**. On the back table there is a selection of **Midwestern** pattern molded flasks and several **Historical Flasks**. On the same table is an extremely rare **mustard jar** with **Highlands**, **Hudson River** and a very rare **Park Theatre** 6" d plate from the **Eagle** border series. There is a group of **Bellflower** pattern glass items on a small table in the corner of the back wall, while a group of late **decanters** and a clear **kerosene lamp** are visible on the far right. Again, **Currier and Ives** prints are displayed hanging from the walls.

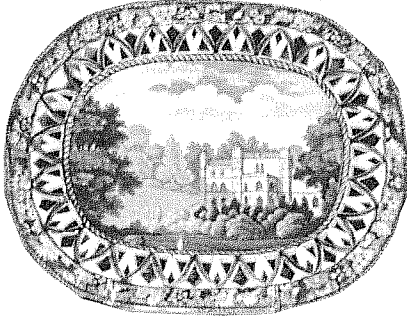
# THE Q China and Glass Quarterly

Volume I

April/May 1997

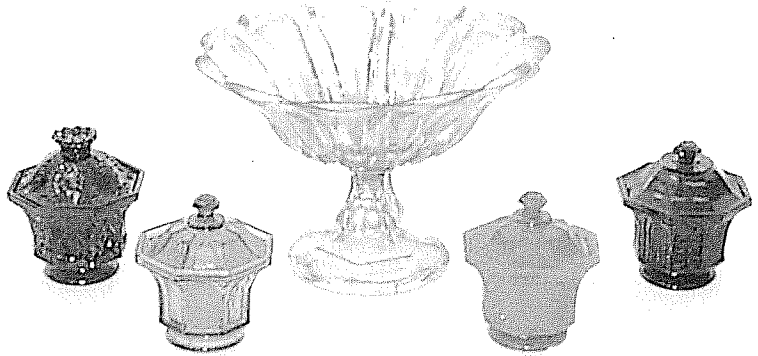
No. 2

## The Grapevine Border Series

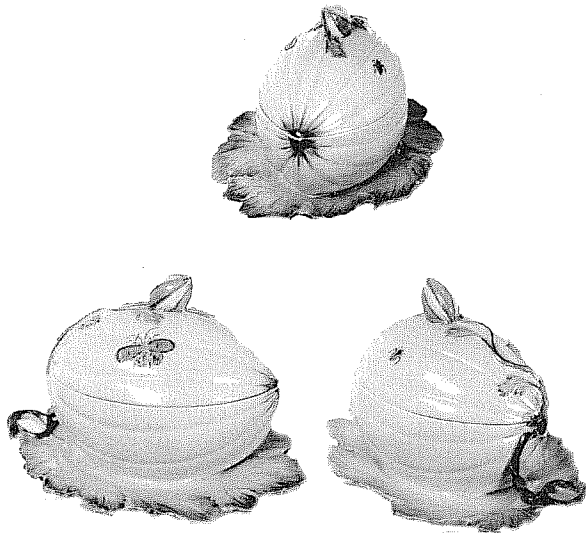


Openwork undertray Wellcombe, Warwickshire. The view taken from Neale's "The Seats of Noblemen and Gentlemen in England, Wales, Scotland and Ireland"

## A Class Glass Collection



## Yellow-Glazed Earthenware



Three views of the same Wedgwood gray tureen in a melon form, placed on a leaf-shaped undertray. Highlighted in green, orange, red and black. Note the butterfly and the ladybug on the sides. It was these "fruit" tureens that caused Josiah Wedgwood to experiment with the yellow glazes.

W  
h  
a  
t'  
s  
  
I  
n  
s  
i  
d  
e

## Meet the Collectors



Mrs. Emma DeF. Morse's coffee pot "Baltimore Assembly Rooms" and "Baltimore Almshouse" by an unknown maker (probably Davenport) at The American Antiquarian Society, Worcester, Massachusetts.

*Plus So Much More.....*