

# Transferware Database of Patterns and Sources



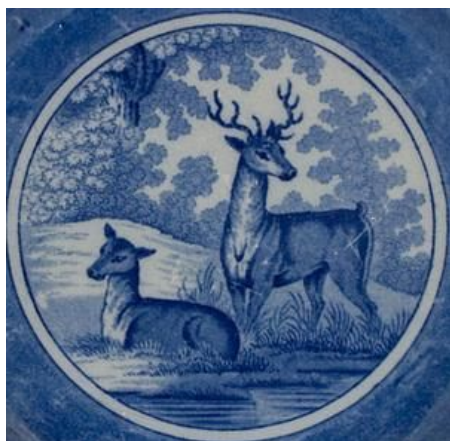
Pattern #1676

Pattern Name: [Deer Pattern](#)

Center

Pattern

Border



Alternate Names: Deer and Hind, Stag and Hind

Category: [Animals / Wild](#)

Border: [Floral and Botanical / Alternating Flowers and Leaves](#)

Additional Information:

Plate, 8.5 inches, maker unknown. There is a border of leaves and flowers. The pattern is illustrated on a cup in Coysh1970, p. 107 (163), where it is called "Deer Pattern." It is unmarked. The Additional Image shows a waste bowl that is impressed W B under a crown. The maker is possibly Wood & Brettell (1818-1832), although the Wood & Brettell mark usually has an ampersand between the W and B. The pearlware (blue tinted) glaze points to an early 19th century manufacturer. See pattern #17584 to see a similar pattern on a jug. Also see pattern #18769 for a similar pattern on a bowl and pattern #18978 for a similar pattern on a saucer.

Body Type: [Earthenware](#)

Print Process: [Underglaze Tissue Printed](#)

Color: [Blue](#)

Maker:

[Maker Unknown](#)

# Transferware Database of Patterns and Sources



References:

[Blue and White Transfer Ware 1780-1840](#)

Coysh, A. W

Devon, U.K., David & Charles (Publishers) Ltd., 1974

Additional



Additional Mark:

Crown

