

Pattern #17491

Pattern Name: [Map of the United States](#)

Center

Pattern



Alternate Names: "Washington"

Category: [American Themes / Souvenir or Commemorative](#)

Border: [Miscellaneous / No border](#)

Additional Information:

Creamware pitcher or jug, 11.25 inches high. This design is illustrated on an 8 inch creamware jug in Teitelman2010, p. 103, and discussed pp. 102 and 104. It is also pictured with a different leafy frame and without the explanatory cartouche at bottom on a jug in Teitelman2010, p. 209, opposite a hand painted firefighting scene. The transfer is based on a map of the United States of America by John Wallis of London, published in 1783 and one of the first printed European images to recognize the new nation. The title cartouche in the lower right corner of the map, pictured p. 102, was copied for the frame surrounding the map of the eastern seaboard on this jug. The images shown include 1. "Fame", blowing her trumpet and carrying a laurel wreath; 2. "Washington securing Liberty to America".; and 3. "Wisdom & Justice dictating to Dr. Franklin", who is shown seated and writing in a book with the date 4 July 1776. The engraver's name, "F. Morris, Shelton" is included at the bottom. Francis Morris of Shelton produced a number of patriotic prints found on Staffordshire creamware. Although there is no specific reference here to the death of George Washington, Morris is not thought to have been in business prior to 1800

# Transferware Database of Patterns and Sources



so it was probably originally produced in response to the American market for Washington commemoratives. In any event the American eagle under the spout, a version of the Great Seal, is captioned with a quote from Thomas Jefferson's inaugural address in 1801, proving a later date. It reads "Peace, Commerce and Honest Friendship with all nations. Entangling Alliances with none. JEFFERSON. Anno Domini 1804". 1804 is the date of the engraving itself. It is one of a number of patriotic transfers pictured on a large pearlware jug in Teitelman2010, p. 95, and is also by Francis Morris. See Ship, or Stock Print #06, pattern #17492, for the transfer of a three masted sailing ship on the opposite side of this jug.

Body Type: [Earthenware](#)

Print Process: [Overglaze Bat Printed](#)

Color: [Printed and Painted](#)

Maker:

[Maker Unknown](#)

References:

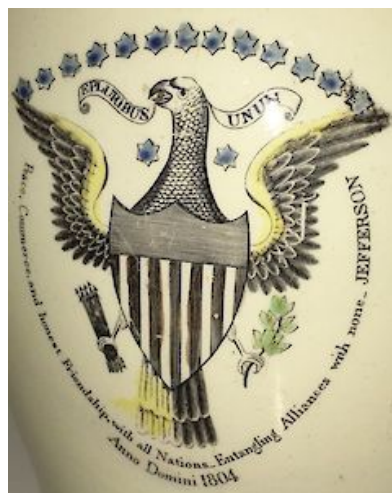
[Success to America: Creamware for the American Market](#)

Teitelman, Robert S., Halfpenny, Patricia A., Fuchs II, Ronald W.  
U.K., Antique Collectors Club, April 2010

Engraver



Under Spout



Opposite Side

