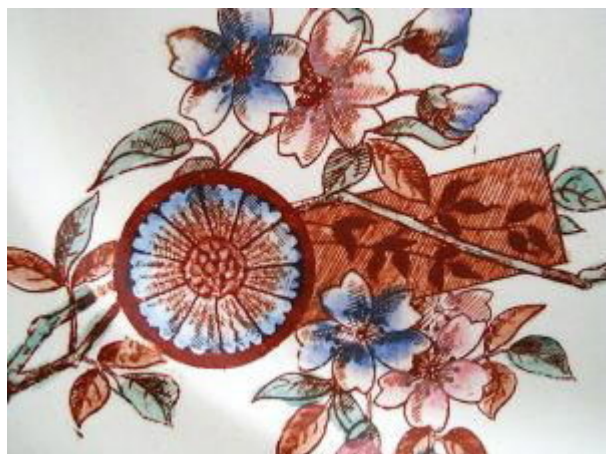


Pattern #6906

Pattern Name: ["Siam"](#)

Center

Pattern



Category: [Aesthetic / Cartouches](#)

Border: [Miscellaneous / No border](#)

Additional Information:

Platter, size unknown, impressed FURNIVAL mark as seen here. According to the Furnivals Pottery website, this impressed mark was used mainly from 1864-71; however, it was continued for a number of years, usually in connection with a printed pattern mark. In the Additional Image a plate, 8.629 inches, has the printed pattern name "Siam" in addition to the impressed maker's name. The pattern is a simple one with pale blue and pinkish overpainting. The circular cartouches that contain stylized flowers and the other motifs are scattered randomly about. One rectangular cartouche is set behind a flowering branch and a circular cartouche. The plate has a motif not seen on the platter: a circular cartouche with a butterfly inside overlaid on a background of flowers and leaves. This cartouche replaces three smaller motifs seen on the platter. Perhaps there are small changes in the pattern depending on the size and shape of the piece. Search "Siam" in the database to find several other patterns by that name by various different potteries. All are very different.

Body Type: [Earthenware](#)

Print Process: [Underglaze Tissue Printed](#)

Color: [Printed and Painted](#)

Transferware Database of Patterns and Sources



Maker:

[Thomas Furnival & Son\(s\)](#)

1871–1890

Cobridge

Staffordshire

References:

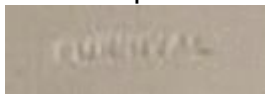
www.Furnivals-pottery.weebly.com

Additional Image



Maker's Marks:

TEXT-Impressed



Ribbon

