

Voices From the Past

Articles, Letters, Sales Lists and Auction Results from 1890 to the Present

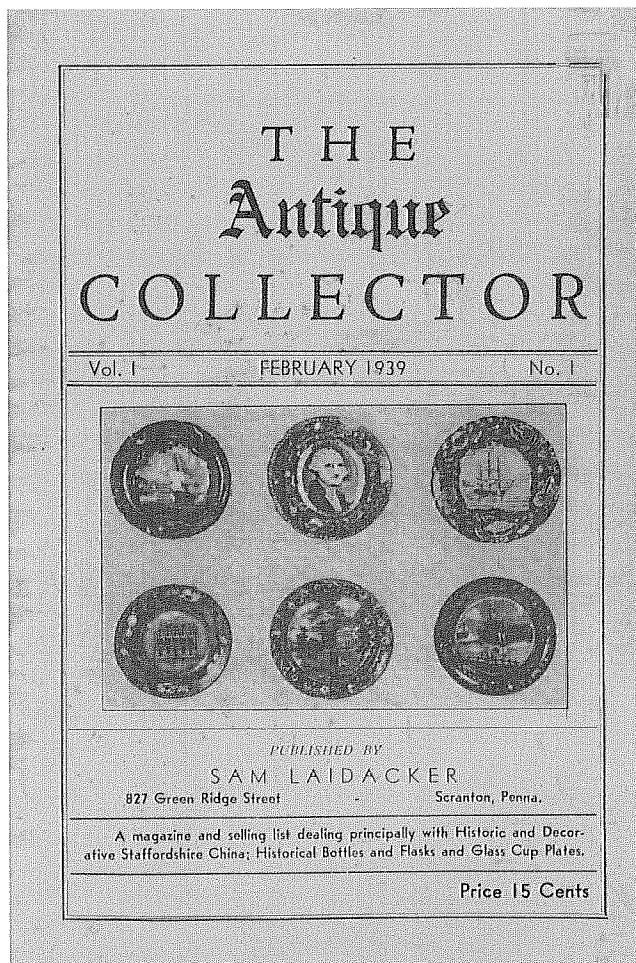
Let Me Introduce You to Sam Laidacker -

It seems only fitting, that we should include in the initial issue of *The Quarterly*, an introduction to a gentleman named Sam Laidacker. Mr Laidacker dominated the field of Historical Staffordshire, and to a lesser degree, the field of Early American Glass, for a twenty year period during the 1930s to 1950s. Sam recently died, but he will be immortalized by the vast amount of information that he compiled and made available to the collectors of his day. He is probably best known for his books, *Anglo-American China PART I* (the American Views) and *Anglo-American China, Part II*, (the English and other views), which he published in 1954 and 1951, respectively. These were both an update of his 1938 work, *The Standard Catalogue of Anglo- American China, 1810-1850*, in which he combined a listing of items by maker, by border, by view, by item and added current auction prices. This led to what we termed as the "second great period of collecting" in the field of Historical Staffordshire, in the introduction to our

book, *Historical Staffordshire; an illustrated check-list*. However, it is not these books that we wish to introduce to you at this point, but rather the little pamphlet initially titled, *The Antique Collector*, but changed by the second issue to *The American Antiques Collector*, because of a conflict with another publication of the same name. Sam published twenty-nine issues of the AAC during the period from 1939 to 1956.

Journey with us, back to February, 1939. To set the historical stage, America was at peace, although the World had been at war for some time. The Japanese had invaded the Asian mainland, Churchill was in the Opposition Party in England and the Axis Powers were reigning unchecked in their landgrab in Europe and Africa. F D R was President. Many of us, including myself, were probably not even born.

Author's note: The front cover of the 1939 issue had one cup plate with a single medallion of George Washington surrounded by the Oak Leaf border of R. Stevenson and Williams. Chipped and somewhat battered, it is unique. At the time of the printing of Laidacker's first issue, it was in the collection of a Mrs. R. W. Tener, who purchased it from Richard and Virginia Wood, specialist dealers who lived in Baltimore, Maryland. At the time of the dispersal of the Tenner Collection, it was acquired by Ellouise Baker Larsen, the author of her own book on the subject. Upon her death, her entire collection was given to The Smithsonian, where the little plate resides to this date. Many years ago, I was told a story with a moral, by a fine man, named Caleb Ewing. Cal, who died a millionaire many times over, was employed by an oil company in his youth and his territory covered the area between Philadelphia and Pittsburgh, along U. S. Route 30. At one time, this was the trail used by peddlers selling their wares to early settlers in the first quarter of the 19th century. They would fill their wagons in Philadelphia and peddle their way to Pittsburgh, replenish there and peddle Pittsburgh items on their way back to Philadelphia. Cal found many wonderful pieces of early glass and china during his travels. Since he was raising a rather large family at the time, he would supplement his income by selling the majority of these items, to the vari-



ous dealers he knew. Whenever possible, he would squirrel a piece away to join his own growing collection (we'll do an article in the future on the fabulous Ewing Collection). I know I'm rambling, so I'll get to the point - Cal found THE medalion cup plate one day and decided that since it was soooo battered, he would sell it. He called his friend Dick Wood and sold it to him for \$75.00. Wood sold it to Tenner, and Cal regretted making that call to his dying day. The moral of the story, as Cal told it, was keep that rarity until you find a better example, and then sell it. Anyway, I digress, back to Sam Laidacker.

I think you might find it rather amusing to see the four page sales listing that was contained within the pages of that first

FEBRUARY 1939

7

TERMS: Unless credit is established, remittance must accompany order. Goods sent on approval to reliable persons. Prices net and everything subject to prior sale. Approval goods must be returned prepaid within 5 days. Prices include packing but not transportation. Add postage or goods will be sent express collect. Everything is in the or best condition unless noted and everything offered is unconditionally guaranteed as to correctness of description, genuineness, authenticity and condition.

HISTORICAL CHINA

Numbers are those given in the new by THE STANDARD CATALOGUE OF ANGLO-AMERICAN CHINA

WILLIAM ADAMS & SONS

- 3 Catskill Mountain House, U. S. 10 1/2" Pink plate. Proof \$12.50
- 3 " " several as above. Pale color, slight defects. 3.00-3.00
- 3 " " another but soup plate. Brilliant deep color. Proof 12.50
- 5 " Harpers Ferry, U. S. 13 1/2" Pink platter. About proof 30.00
- 6 " Headwaters of the Juniata, U. S. 10 1/2" Sepia soup plate. Six on hand 8.50
- 6 " Lake George, U. S. 13 1/2" Pink plating. Scarce. Slightly discolored 35.00
- 7 " Military School, West Point, U. S. 2 1/2" Sepia platter. Mismarked
- 8 " Niagara Falls. Proof. (from Dickins Collection, Nat'l Museum) 30.00
- 9 " Montevideo, Connecticut, U. S. 7" Pink plate. Slight defects 3.50
- 11 " View Near Conway, New Hampshire, U. S. 9" Pink plate. Proof 12.00
- 15 " New York, U. S. 1" Pink cup and saucer with sailor boy and girl border. Cup proof, saucer proof except short line. RAKE 20.00
- 20 " Log Cabin (Harrison modification) Pink covered sugar 25.00

RALPH and JAMES CLEWS

- 30 "American Eagle On Urn". Dark blue teapot. Appears proof but has small crack from top of spout. Scarce view and beautiful. 20.00
- 36 "Landing of Lafayette". Dark blue platter. Proof (few scratches) 75.00
- 36 " " Dark blue creamer 5" high. Proof appearance but has several cracks. Rare item from Hearst Collection 15.00
- 36 " " Covered sugar bowl to match. Knob repaired on cover. Slight check in base. Appears proof. Scarce 25.00
- 36 " " Covered gravy tureen. Cover only has Landing, etc. Base an English view. Both came together and both proof. 8 1/2" long 15.00
- 36 " " 10" x 12 1/2" Covered dark blue vegetable dish. Cover proof, small crack in base. Rare item 60.00
- 38 "Peace and Plenty". 8" dark blue plate. Rim chip repaired. 6.50
- 38 " " 19" dark blue platter. Rim chip. A real beauty 42.50

STATES

- 40A "States". 10 1/2" dark blue plate. Brilliant proof 25.00
- 40I " " (fishermen instead of sheep) 10 1/2" dark blue plate. Appears proof but has several cracks 10.00
- 40B " " As above but a soup plate. Small crack 8.00
- 40C " " 9" soup plate. Brilliant proof 20.00
- 40F " " 7" dark blue pitcher. Appears proof but handle was broken and replaced. A rare piece 25.00
- 40G " " 4 1/2" cup plate. Two small checks. Appears proof. Rare 25.00
- 40L " " 10" pitcher. Appears proof but slight check under lip. Size rare 40.00
- 42 "Water Girl". Dark blue wash bowl and pitcher. Bowl damaged but good appearance. Pitcher almost proof. 15.00
- 42 " " Dark blue cup and saucer. Proof 5.00
- 43 "Winter View of Pittsfield, Mass." 8 1/2" Dark blue plate. Appears proof 10.00
- 49 "Repose In The Woods" (Don Quixote) 5 1/8" dark blue plate. Proof 12.00
- 72 "Dr. Syntax Sketching The Lake". Gravy boat. Damaged. Scarce 4.00
- 79 "Dr. Syntax Setting Out On His Second Tour" 9 1/2" platter. Damaged and repaired but a scarce view 6.00
- 98 "Christmas Eve" (Willie Series) 9" plate. Brilliant proof 15.00
- 98 " " another but glaze is slightly worn 12.00
- 100 "The Escape Of The Mouse" 9 1/2" square footed compact 4 1/2" high. Pfl 25.00
- 100 " " oblong vegetable dish. Proof except J' crack 20.00
- 103 "The Rabbit On The Wall" 7 1/2" vegetable dish. Cracked 5.00

Ted Gallagher
 1793 Riverside Dr. #4-C
 New York, NY 10034
 212-942-9064



"Church and Buildings
 Adjoining Murray Street, NY"

"Old Blue" rarities sought, traded ~~~
 All correspondences are welcome ~~~

8 THE ANTIQUE COLLECTOR

PICTURESQUE VIEWS—HUDSON RIVER SERIES

105	"Bakers Falls" 9" plate. Black or sepia. Proof	9.00
105	" " 9" black plate. Few chips	4.50
106	"Fort Edward" 5 1/2" black plate. Proof	8.00
106	" " 5 1/2" sepia plate. Inside check	4.50
106	" " another. Pink. Glaze on edges worn	6.00
108	"Near Fishkill" 10" sepia plate. Proof	5.50
108	" " three 10" sepia plates. Edges worn. Each	14.00
109	"Near Fort Millir" 7 1/2" sepia pitcher. Proof	9.50
109	" " 9" sepia soup plate. Proof	14.00
110	"Fort Montgomery" 6" black plate. Proof. Scarce view	10.00
110	" " another 1" check. Both from Erskine Hewitt Collection	5.00
110	"Near Hudson" 6" black plate mismarked "Fort Montgomery. Kim flakes.	9.00
113	" " 9" purple vegetable dish. Proof	12.00
114	"Jessup's Landing" 10" sepia soup plate. Proof. Hearst Collection	12.50
115	"Junction of Sacandaga and Hudson River" 6 1/2" sepia plate. Proof	12.50
117	"Newburg" 15" black platter. Rim glaze slightly worn	50.00
118	"New York, Hudson River" View of the city. Fort in foreground on right 19"x22" light blue platter (5" circle). Very rare view	19.00
119	" " Pentecost in Allegheny" 16" handled tray. Damaged. Scarce	14.00
122	"Pittsburg" 10 1/2" medium blue plate. Proof. Hearst Collection	9.50
123	"Rapids Above Hadley Falls" 7" purple plate. Proof	6.00
124	"Near Sandy Hill" 8" sepia plate. Proof	8.00
126	"West Point" 8" black plate. Proof	

DAVENPORT—GODWIN—GREEN—HEATH

135	"Montreal" 18" pink platter by Davenport. Proof	25.00
136	"Franklin" pink basin. Franklin with kite. Chip under side	30.00
143	"Baltimore" 18" light blue platter by Godwin. Inside crack	11.00
145	"Narrows from Fort Hamilton" Godwin 10" plate. Hair line	6.00
146	"Schuylkill Water Works" 9 1/2" sepia plate. About proof. Godwin	5.00
150B	"W. Penn's Treaty" 9 1/2" sepia soup plate. Proof. Green	27.50
150G	" " 7 1/2" sepia plate. Small chip under side. Green	9.00
151	"Richard Jordan" 13 1/2" purple platter. Proof. Hearst Collection	12.50
151	" " 9 1/2" sepia plate. Proof (Ch. Heath)	
151	" " 9 1/2" lavender plate. Proof	

JOB and JOHN JACKSON

156B	"American Scenery, Conway, New Hampshire" 5" scalloped edge pink cup plate. Proof. Rare	6.00
157	"American Scenery" lavender pink cup and saucer	9.00
159	"Battery, etc., New York" 8" black plate. Proof	14.50
159	" " another in pink. Proof	14.00
159	" " another. Purple. Proof. Hearst Collection	16.00
162	"City Hall, New York" 10 1/2" purple plate. Proof	16.00
167	"Hancock House, Boston" 8" pink plate. Proof. Hearst Collection	15.00
170	"Harvard Hall, Mass." 6 1/2" black plate. Proof. Hearst Collection	8.00
170	" " another. Sepia. Fine but has two small lines	19.00
172	"Lake George" 9" x 9" tureen tray. Perfect. Dish	25.00
173	"Newburgh, New York" 18" black platter. Proof. Hearst Collection	14.00
176	"The Race Bridge Philadelphia" 9" pink plate. Proof	8.00
176	" " as above. Slight crack	12.00
176	" " as above but 7 3/4" medium blue. Proof. Dickins Collection	22.50
177	"At Richmond" 7" purple plate. Proof	25.00
178	"Scheenecady On The Mohawk River" 9 1/2" purple pitcher. Proof	25.00

T. MAYER

193	"Arms of Maryland" Large footed open scroll two handle urn or tureen. 16" long and 8 3/4" high. No cover. Practically proof. Very rare	\$200.00
196	"Arms of New York" 10" plate. Brilliant proof	60.00
197	"Arms of North Carolina" 14 1/2" platter. A very rare platter. No chips nor cracks but glaze worn and cut	200.00

CHARLES MEIGH

208	"City Hall, New York" 10 1/2" light blue plate. Proof	9.00
210	"Village of Little Falls, New York" 8 1/2" light blue plate. Glaze is worn but design clear. Scarce. (Note cat. error)	12.00
213	"Utica. Large saucer or 7 1/2" sepia plate (check) Either	3.50
205	"Ballston Springs" (Newly listed view) 10 1/2" round light blue bowl	12.50

J. & W. RIDGWAY—Beauties of America Series

235	"Almshouse, Boston" large open handle soup tureen. Cover (erk) "Cambridge College" 246. Base proof. (Hearst)	55.00
236	"Almshouse, New York" 16 1/2" platter. Proof	42.50
238	"Bank of Savannah, U. S." 244 "Exchange, Charleston" & "Insane Hospital, Boston" 248 (on cover erk) Small scroll-handle covered gravy tureen	30.00
240	"City Hall, New York" 10" plate. Deep color. Proof	12.50
240	" " another. Proof but lighter in color	10.00
249	"Library, Philadelphia" 8 1/4" plate. Fine appearance but glaze worn	9.00
251	"Octagon Church, Boston" 9 1/2" soup plate. Fine but cracked	7.50

JOHN RIDGWAY

260	"Columbian Star" Log cabin 13" light blue platter. Proof	15.00
260	" " Miniature light blue sugar bowl with cover. Proof	4.00
260	" " 7 1/4" sepia plate. Proof	4.50
260	" " 10 1/4" green plate. Proof	7.00
260	" " 10 1/4" light blue plate. Proof. I have several	5.00
260	" " as above but slight check	3.00

WILLIAM RIDGWAY & CO.

266	"Caldwell, Lake George" 7 1/2" black plate. Small line	4.00
269	"Harpers Ferry from the Potomac" 8" blue plate. Proof	4.50
270	"The Narrows from Fort Hamilton" 17 1/2" black platter. Proof	14.00
273	"View from Fort Putnam" 15 1/2" light blue platter. Proof	14.00
274	"Valley of Shenandoah from Jefferson Rock" 7" light blue plate. Proof	6.00
275	"View from Ruggles House, Newburgh" 10 1/2" light blue plate. Proof	6.00

A. STEVENSON—R. STEVENSON—R. S. & W.

309	"Junction of the Sacandaga and Hudson Rivers" 14 1/2" dark blue platter by A. Stevenson. Proof. Very rare	225.00
339	"Brooklyn Ferry" Illustrated page 4. Hope to have it soon.	
344-343	"Exchange Charleston" 10 1/2" serving dish by R. Stevenson. Proof with "Esplanade & Castle Garden" on cover. Cover appears fine but is cracked. Two very rare views on a beautiful piece	75.00
345	"Fort Gansvoort, New York" 7" plate with white edge. See Ill. page 4. Brilliant proof. (From Hearst Collection.)	65.00
352	"New Orleans" pinkish mulberry teapot by R. S. with this very scarce view. Practically proof and a beautiful piece	50.00
362d	"City Hotel, New York" 8 1/2" plate with medallions of Washington and Lafayette at top and vignette "Entrance of the Erie Canal into the Hudson at Albany" 266 below. A dark blue brilliant proof. Rare	100.00
370	"Nahant Hotel near Boston" 8 1/2" plate. (with tree) Scarce and proof except for slight glaze wear. Deep blue	25.00
373	"Park Theatre, New York" 10" plate. Medium blue. Brilliant proof	22.00
373	"Park Theatre, New York" note. 6 1/2" plate impressed "John Geddes, Verreville Pottery, Glasgow". Proof and rare	25.00
374	"Scudder's Museum" 7 1/2" dark blue plate. A beauty but has been broken in half. Small part missing. Rare	10.00

JOSEPH STUBBS

387	"Church in the City of New York" 6" plate. Small crack. Ill. Rare	22.50
388	"City Hall, New York" 6 1/2" plate. Ill. Glaze worn slightly at ridge. A very scarce view by Stubbs	22.00
389	"Fairmount near Philadelphia" 10" plate. Proof	14.00
389	" " 10" plate with small line. Deep color	10.00
389	" " 10" soup plate. Proof	12.50

391	"Hoboken in New Jersey" (People and sheep) 4" salt shaker. Slight nick in base. Proof appearance. Rare	20.00
392	"7 3/4" plate. Appears proof but slight wear and a short line	10.00
393	"Nahant Hotel near Boston" 8 1/2" plate. Brilliant proof	17.00
397	"Upper Ferry Bridge over the River Schuylkill" 8 3/4" plate. Proof	15.00
400	"Woodlands near Philadelphia" 7" plate. Bl. Brilliant proof	17.00
400	"10 1/2" open edge platter. Appears a brilliant proof but has a crack at base rim. Very attractive and scarce view	30.00
ENOCH WOOD & SONS		
<i>Griffin Border A37</i>		
412	"Constitution" (Cadmus at Anchor) 10" plate. Proof	20.00
416	"Cape Coast Castle on the Gold Coast Africa" 10 1/2" brilliant dark blue platter. Frigate with U. S. flag. Practically proof	40.00
418	"Chief Justice Marshall" 8" plate. Brilliant and almost proof	18.00
420	"Commodore MacDonough's Victory" 10" plate. Proof	22.50
420	"10" plate. Appears proof but a 1" line	10.50
420	"7 3/4" plate. Fine appearance but a 6" crack	5.00
420	"9" plate. About proof	15.00
423	"Hartmouth" (English eye) 9 1/2" plate. Proof	14.00
427	"Earth on the Thames" 1 1/2" platter. Proof	15.00
432	"Southampton, Hampshire" 7 3/4" plate. Brilliant proof	11.00
436	"Wadsworth Tower". Have almost a tea set. Inquire	
<i>Regalia Shell Border A38</i>		
438	"Battery, New York" trefoil border cup plate. (See cover). Proof	20.00
439	"Bellville on the Passaic River" 8-465 "New York Bay" on cover. Large dark blue soup-tureen. Brilliant. Has a few checks. Scarce view	65.00
451	"Castle Garden and Battery, New York" 10 1/2" dark blue platter mis- marked "Lake George". Brilliant and proof	115.00
450	"The Capitol, Washington" 7 1/2" plate. Crack and glaze worn. Rare	14.00
452	"Carskill House, Hudson" 6 1/2" plate. Rare. Brilliant proof	30.00
457	"Highlands, Hudson River" Brilliant blue platter. Rare and proof. 12"	61.00
462	"Marine Hospital, Louisville, Kentucky" 9 1/2" plate. Proof	16.00
467	"Passaic Falls" covered gravy tureen. Slight crack. Rare	52.00
471	"Falls Rock, Niagara" 10" soup-plate. Brilliant proof	17.50
472	"Tappan Bay from Greenburgh" 8" vegetable dish. Cracked. Rare	22.50
473	"Transylvania University" 9" plate. Proof	17.00
FRENCH PLATES (See Next Issue)		
<i>Miscellaneous and Celtic Series by Heald</i>		
514	"Franklin's Tomb". Have a number of pieces. Inquire	9.00
515	"Landing of the Settlers at Plymouth, etc." 10" plate. Proof	8.50
515	"Same view. 9" plate. Proof. Good color	10.00
515	"6 1/2" plate. Scarce size, nice color and proof	12.00
516	"State House, Boston" (with chair) 8 1/2" plate. Proof	7.00
517	"Washington at Tomb" 6 3/4" large size saucer. (Hearst)	15.00
527	"Fairmount Water Works on the Schuylkill" 9" black plate. Proof	12.50
532	"Natural Bridge, Virginia" 9" black plate. Proof	

Continued on Page 13

China Listing (Continued)

536	"Pass in the Catskills" 7" black plate. Proof	10.00
539	"Transylvania University, Lexington" 10 1/2" light blue plate	14.00
540	"Trenton Falls" 8" pink plate. Proof. Scarce	11.00
557	"Washington" (Canova statue of _____ as Caesar) 7 3/4" pink plate. Proof.	12.50
557	"Light blue open work open handle basket. Proof	22.50
557	"12" round pink platter with green center. Rare and proof	25.00
546	"Castle Garden" 8" medium blue plate. About proof. Scarce. (Hearst)	15.00
547	"Dumb Asylum, Philadelphia" 8 1/2" mulberry plate. Proof. Rare (Hearst)	17.50
549	"President's House, Washington" 10 1/2" mulberry plate. Edge rough	10.00
550	"State House, New Haven" light blue soup tureen. Rare. Damaged	20.00
UNKNOWN MAKERS		
<i>American City Scenes</i>		
565	"Columbus" (Ohio) 14 3/4" dark blue platter. Appears proof but had a piece broken and repaired. A very rare view	60.00
567	"Hobart Town" 9" medium blue plate. Scarce. Proof (Hearst)	14.00
569	"Louisville" (Kentucky) 12 1/2" dark blue platter. Proof. Very rare	125.00
570	"Near Fishkill" 7 3/4" plate. Cracked. Rare	7.50
572	"Quebec" 9" dark blue plate. Proof	12.00
Various Makers		
581	"Albany Theatre" so-called 3 1/2" cup plate. Tiny check (See cover)	12.00
585	"Exchange, Baltimore" 10" plate. Brilliant proof	20.00
601	"Railroad" dark blue saucer only. Proof	5.00
602	"Cadmus" (?) 9" plate. Dark blue, brilliant proof	15.00
620	"View from Coenties Slip" (New York Fire) 7 3/4" sepia plate. Proof	10.00
634	"American Villa" 8 1/2" dark blue plate by B. B. & B. (no Lawrence Man- sion about it). Brilliant proof	5.00
845	"Spatter" Peacock or pea fowl 3 3/4" green cup plate. Proof except for a tiny kiln flaw but very rare	50.00
	"Shannon" medium blue 10" plate with British frigate. Companion to 639	
	"Chesapeake & Shannon" platter. Proof	50.00

Space does not permit me to list all historical china that I have in stock and I have not touched the decorative. Both will be included in the next issue when I expect to have a lot of new material to offer. I already have eleven views in the Wood, French Series, A39 and a number of pieces by known and unknown makers. Send in your subscription to be sure that you will continue to receive THE ANTIQUE COLLECTOR. The price is but a dollar for twelve issues.

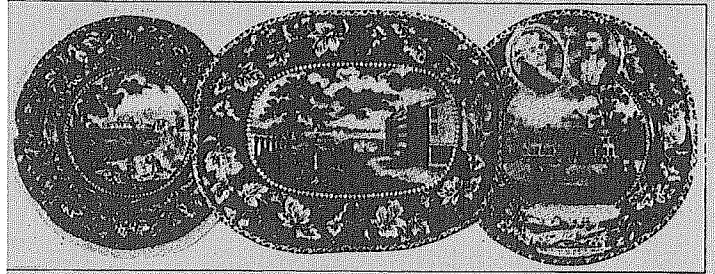
issue. So, for your amusement and education, here it is:

Wouldn't it be nice to be able to travel back in time with the money you earned in 1996 in your pocket? You could buy the whole list for the price of a few pieces, at today's prices. However, this should not surprise us, since it has been over fifty years since these prices/pieces were offered. If you had put the money in an 8% certificate of deposit in 1939, what would that \$225.00 you spent on the Junction of the Sacandaga platter with Sam, bring you today? Of course, there are other benefits to owning a lovely piece of old blue, rather than just the monetary.

In addition to the listing of prices, *The American Antiques Collector* published original research in many fields, includ-

ing Staffordshire, English Ceramics, American Glass, Historical Flasks and others. In the 1939 edition Sam included the following article on Staffordshire.

THE VINE LEAF BORDER SERIES A33



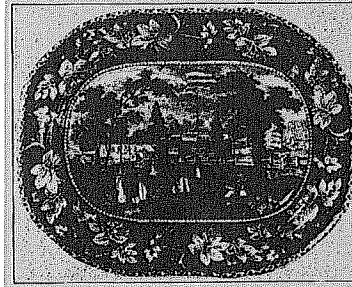
Fort Gansevoort 345

Brooklyn Ferry 339

Hospital Boston 347a

IN this initial article I will not discuss the maker to great extent because there is yet considerable question. Chaffers lists Ralph Stevenson alone in 1815; & Sons in 1834 and gave up business in 1840. I have seen some pieces in this series impressed "STEVENSON" and quite often the back has "R S" printed and which can be understood quite easily while others have "N G" which is puzzling. The sail on a boat in the Esplanade platter has "R. S. & W Cobridge Pottery" on it and I have a small tray before me with a double scroll mark "R. STEVENSON & WILLIAMS Cobridge Staffordshire" which will explain the initials. Just what this partnership was and when it was in effect is not clear from present information. For detailed investigation on both Andrew and Ralph Stevenson I refer you to *Antiques Magazine*, Nov. 1934 by E. B. Larsen. Regardless of missing details we do know that it is one of the most beautiful series of American views as well as one of the most elusive. Most views are found both with and without the white edge.

In *The Standard Catalogue of Anglo-American China* I list fourteen different and I find there is still another. I suspected it when I listed a soup tureen ladle with "Fort Gansevoort" 345 on it. Now two of the tureens have come to light. The main view is "Pennsylvania Hospital". The first one I saw and has "Almshouse, Boston" 335 on the cover. The second has "Battle of Bunker Hill" 337 on the cover and inside. The tureen is the same shape as the "Fulton Market" 346 gravy tureen which is shown here. "Fulton Market" in New York City is a very rare subject and I have seen but two in my experience. This little tureen sat on the "Columbia College" 341 tray alongside of it and was purchased by the Teners at the Hearst sale for \$150.00. Note in the catalogue that neither has been sold in recent years. There is a tray



It might be interesting to see what the last fifty+ years have added to our knowledge of this particular series, based on this article. First, do we know for sure that the maker is actually Ralph Stevenson and Williams? If you said yes, you're correct. On to the next paragraph. Sam lists a soup ladle with a view titled **Fort Gansevoort**. This is correct, since it was illustrated on the May, 1904 cover of *The Old China Magazine*. (yes, I said 1904, but more about *The Old China Magazine* in another issue). However, do we know of any other? (The answer is yes. The Larry Fair/Elry Groves collection contained a soup ladle with **New York Battery/Flagstaff Pavilion** on it. That Collection was sold by us in 1985 and the ladle, which was perfect, brought \$1320.00). He makes another interesting statement, as regards the form of the soup tureens, in that they have the peg feet and slightly swayed back of the little gravy tureen. That is not the norm, but rather the exception in this series. Of the five or so soup tureens known to exist, the majority are oval in shape and have a solid, not footed base. One very interesting item that is mentioned was that there was a marked example with the title



"Fulton Market, New York 346" and Columbia College, New York 341"

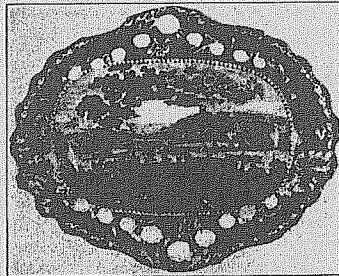
in the Morse Collection in the American Antiquarian Society in Worcester, Mass., but very few collectors or collections can show another.

One of the most popular and often illustrated views in this series and shown here is "Esplanade and Castle Garden" 343 platter. A 16½" one in the Hearst sale brought \$370.00 having advanced from \$140.00 in the Alexandre-Pomkins sale in 1937 altho Mr. Hearst paid \$1100 for this one in the Kellogg sale. The view is found, too, on pitchers and on the cover for the rare "Exchange, Charleston" 344 serving dish.

One, two and four medallions were used in this series, too, and are very scarce. "Battery, New York" 338a with medallion of Washington, a 7" plate, brought \$200.00 in the Hearst sale after having sold for \$510.00 in the Tomkinson sale a few years previous. I doubt if an offer of triple that figure could produce another. Two medallions were used on "Hospital, Boston" 347a which brought \$65.00 and shown here. All this series is beautiful. The blue is especially rich and deep and the glaze heavy that there is plenty of brilliance. Altho not so many pieces are found, they are generally in fine condition. The four medallions came on a 10" plate, "Capitol, Washington" 340. All three vignette views were used and medallions are the same as those in the oak leaf border A34.

"Brooklyn Ferry" 339 is found on both a vegetable dish and a 10¾" platter and either is very scarce. If all goes well I will have a platter to offer very soon. The next larger size platter is "Battle of Bunker Hill" 337 and is 12½". Who wouldn't like to own one? The tureen tray shown here had a rim chip and sold for \$200.00 in the Hearst sale having come from the Kellogg collection in 1925 at \$400.00.

"Fort Gansevort, New York" 345, 7" plate shown here is one of the inland views. The plate is beautiful and by no means common despite the



"Battle of Bunker Hill 337"

fact that this one brought but \$50.00. I want more for mine. The view is found, too, on the tureen ladle. Possibly the most often found view of this series is the "Almsouse, Boston" 335 a 17" platter, but it is just as good looking as any of the rarer subjects. The other views in the series are "Almsouse, New York 336 and "Deaf and Dumb Asylum, Hartford" 342 which went with the bowl "Lawrence Mansion, Boston" 348.

This later view is so marked and there is no need for "American Villa" 634 being referred to as "so-called Lawrence Mansion." The bowl is rare despite the fact that one was incorrectly catalogued as "so-called" in the Hearst sale and went thru a "sleeper" at \$30.00. Still another view is shown on the cover of the "Fulton Market" gravy tureen, but I have never been satisfied which of the many names given it is correct.

Lawrence Mansion. Please contact us if you have seen this title on any piece from this series. Back to the article, Sam closes with the cover of the gravy tureen as being an unknown view. As we now know, it is a rare view of a rare building, namely the **Masonic Hall, Philadelphia** It is illustrated and identified in our book, *Historical Staffordshire, an illustrated checklist*. So, as you can see, we have learned a bit since 1939. However, I bet that much of the above "new" information was learned as a result of the AAC.

In future issues, we will explore many more of the twenty-nine volumes of *The American Antiques Collector* and you will become better acquainted with Sam and the other dealer/collectors of this period. In the Spring issue, we will review one of his articles on the English views.



Gravy tureen cover, Masonic Hall, Philadelphia

The Roling Collection - Part I

True Jewels of American Blown Glass - Sold at Absentee Auction July 15, 1983

The elderly lady in the wheelchair pushed herself out of the booth next to mine and as soon as she caught sight of the four showcases filled with the Caleb Ewing Collection of glass, she headed in my direction. "Do you purchase glass?", she asked. "What type of glass do you have?", I answered. "Well, if you are interested, why don't you come to my house tomorrow, before the show opens." Naturally, the next morning I could be found ringing the doorbell, at the appointed hour, of a rather large house on Lake Michigan, about one hour north of Chicago.

The same lady opened the door and noted the surprise on my face, when I saw she was without the wheelchair. "I just use the darned thing when I'm on my feet a long time," she explained. She invited me in and stated that I probably wanted to see the glass. She opened a corner cupboard in the hallway to reveal

a large group of clear pattern glass. Noting my face dropping in disappointment, she guided me out to the kitchen and there, with light streaming through it, was a showcase containing glass. Blown and pattern molded glass, in blue, green, citron and amethyst. Sugar bowls, creamers, salts, pans and vases. Wow!!!! Over the next few months we quickly became friends, while negotiating the sale of the collection. I learned that she and her late husband had formed the collection during the period from 1930 through the late 1940's, buying their pieces from two giants of the time, Neil Gest and Rhea Knittle. She said they did buy a few pieces from that "young man," George McKearin. They had enjoyed the pursuit of the items and the thrill of ownership and now it was time to give other collectors a chance. Thus the collecting world was given the opportunity to obtain some of the finest glass ever made in America, and we initiated a new sales concept, called an "absentee auction."

SIDDALL-16027R

THE Q China and Glass Quarterly

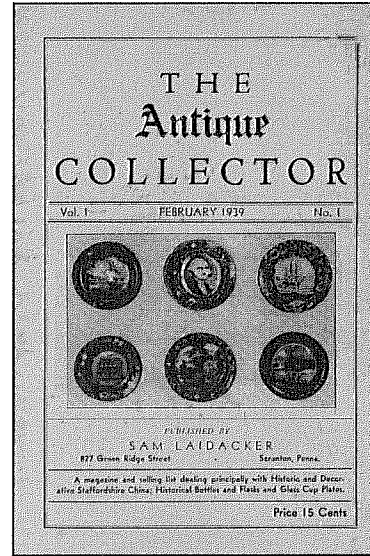
Volume I

January/February 1997

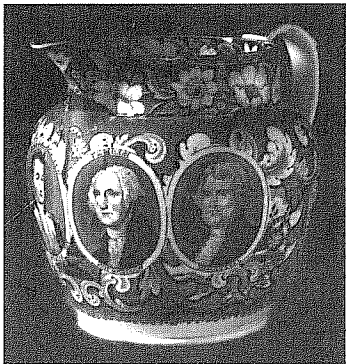
No. 1



The Roling Collection - True Jewels of American Blown Glass



Laidacker's First Issue of the AAC

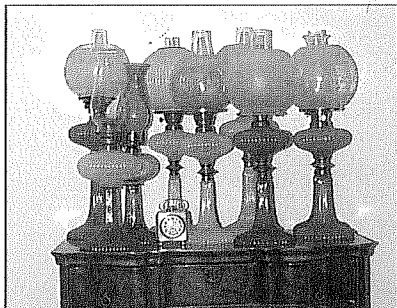


Northeast, C. S. & S. and Sotheby's sell bluelots of it!

What's Inside



The Barlow Sale - October, 1996



A Fabulous New England Collection

Plus So Much More.....