

TRANSFERWARE COLLECTORS CLUB

Summer

BULLETIN

2000

~ CLUB NEWS ~

GREAT NEWS from Norman Wolfe !!!!!!! The IRS has approved our 501 (a) tax exempt status. Our advance ruling period ends March 31st, 2003, at which time we must prove we have lived up to all of their conditions.

As such, our membership can now claim their dues as a charitable donation. Since they have backed up the approval to November 30, 1998, the dues for this year are eligible as a charitable donation. However, the cost to attend the annual meeting cannot be claimed. So we are now an "official" non-profit organization.

Now to drop the other shoe.....also from Norman Wolfe. With this issue of the T.C.C. Bulletin, *all* memberships are due to be renewed. For some of you, this first year's membership has run from November, 1998 until August 31, 2000, and has included four copies of the Bulletin, plus a copy of the membership roster (enclosed with this issue of the Bulletin). In order to save the Club money, this will be your **only** reminder, so please renew now. A renewal brochure is included for your convenience. Make your renewal check payable to the T.C.C. and send it to Norm (address below and in the brochure). Your new membership will take effect with the next Bulletin, on September 1st, 2000 and will run for a period of a year, through August 31, 2001. As stated above, these dues are tax deductible.

Temporary Officers and Their Duties



David Arman
P O Box 39
Portsmouth, RI 02871
401-841-8403
email: davidarman@cs.com
President
Editor-Bulletin
Website Operator

Judie Siddall
734 Torrey Ct
Palo Alto, CA 94303
650-494-7920
email: merlinbl@pacbell.net
Vice-President
Secretary
Committees

Norman Wolfe
PMB 541
1500A East College Way
Mt Vernon, WA 98273
360-336-5835
email: floboo@pacifcrim.net
Treasurer
Membership

There's more.....also included in this mailing of the Bulletin are a ballot and a proxy. If you are not attending the First Annual Meeting in August, we still need your ballot for the slate of members running for the Board of Directors. In order to vote absentee, you must fill out your proxy sheet, fill out your ballot and send to Norm Wolfe. By doing so, you will authorize Norm to cast your votes for the members you wish to elect to the Board. Once again, please attend to this while it is fresh in your mind and send it off today. Many thanks.

The First Annual Meeting - August 4 - 6, 2000. Have you made your reservations yet? (See the Spring issue for details).

Contacts

Transferware Auction: Dave Arman (401) 841-8403 or Joseph Arman (860) 974-7008

Program and general information: Judie Siddall (650) 494-7920

Registration: Norman Wolfe (360) 336-5835

Transferware Show and Sale: Dina Zuger (650) 568-0337

Deadlines

General registration: May 30, 2000

General registration final payment: May 30, 2000

Auction registration: June 30, 2000

Show and Sale registration: June 30, 2000

Transferware Auction: There will be a \$10.00 contribution* per item offered for auction, which will be considered a tax deductible contribution to the T.C.C. Rational reserves will be accepted to protect your investment. Non-attendees may also sell at this auction, at a cost of \$15.00 per item, plus return shipping costs, if the item doesn't meet your reserve. Please contact one of the Armans (listed above) as soon as possible with your intentions, but no later than June 30, 2000.

Show and Sale: In the last Bulletin, it was erroneously reported that there would be no additional cost for this function for exhibitors. The Bulletin was in error. There is a \$25.00 tax deductible contribution* to the T.C.C. for each draped table. Please contact Dina Zuger (listed above) as soon as possible with your intentions, but no later than June 30, 2000. (**Day Trip prices - continued on page 11**)

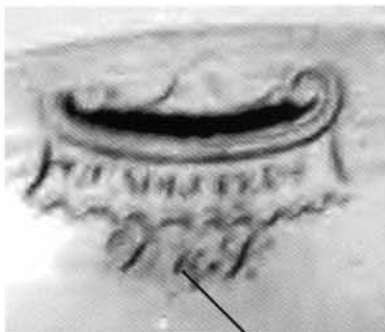
**These two contributions are the only income the TCC will derive from this Annual Meeting.*

Goodfellow, J Heath, Edwards & Hall (probably Edwards Dale Hall), J & R Booth (probably T & R Boote), J. Edwards and Pankhurst & Co. At some future date, with the help of my friends in the White Ironstone China Association, I hope to help identify the body styles of the white ironstone found on the Arabia.

The list of the cargo was fascinating: door knobs, keys, nails, hooks & eyes, traveling ink wells, flintlock trade guns, cognac, bottled gooseberries, cheese, butter, mackerel, kitchen equipment, oysters, tooth brushes, buttons, flasks, trade beads, clothing, tools, etc. Both books make very interesting reading giving a picture of what life was like in the 1850s, as related to the goods being shipped to the frontier in 1856. Both books can be ordered from the Arabia Steamboat Museum, 400 Grand Blvd., Kansas City Missouri 64106 (816) 471-1856.”

~ New Discoveries ~

I have always thought that the QUADRUPEDS series was by the Hall Pottery, then while browsing the internet the other day, I stumbled upon a 10”d LION plate with the typical underglaze title on the reverse, but with an added feature of the initials D. S. under the cartouche. This didn’t make sense, so I quickly reached for my Kowalsky, *Encyclopedia of Marks*, (reviewed TCC Bulletin, Spring, 2000) and learned that this was already a known fact.



Sorry, the photo I downloaded was blurred

It seems that A. W. Coysh in *Blue and White Transferware* noted that “Plates bearing the same patterns as John Hall’s “QUADRUPEDS” series are known with the added initials “D. & S. on the printed cartouche mark.” These initials are the

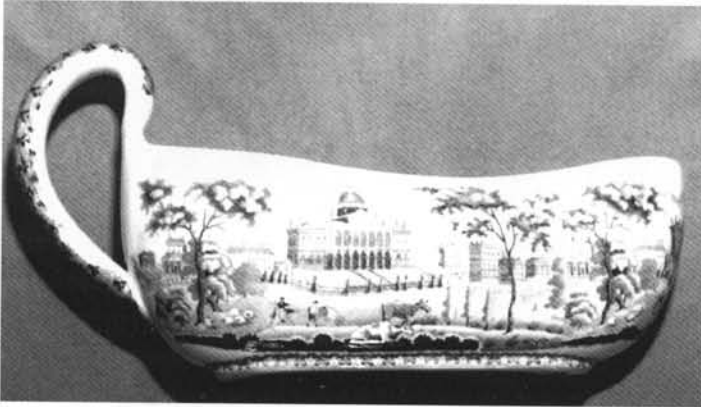
marks of Dimmock & Smith, Tontine Street, Hanley, Staffordshire, c1826-1833 or 1842 - 1859. The normal underglaze mark with the I. Hall signature indicates the pottery of John Hall,



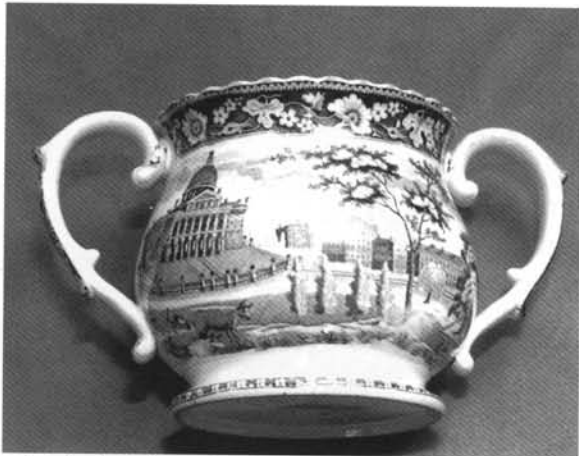
Burslem, 1814 - 1832. This seems to indicate there was a bit of plagiarism between these two potteries with this series. However, there are some noticeable differences in the border design and the general design of the vignettes containing the various animals placed around the central scene and the exotic plants which serve to separate these vignettes. The Dimmock & Smith version must not have been terribly successful, as this is the first time in thirty years that I recall seeing this variant.

From Gene Fleischer in Georgia we have three unrecorded forms in the Rogers, BOSTON STATE HOUSE Dinner service. The first is not a gravy boat, although the form is somewhat similar. It is a *Bourdaloue* or Coach Pot and is a toilet article for ladies who were subjected to long church services or were traveling and didn’t have access to toilet facilities.

I believe this is the first time this has been recorded with an American View, although other toilet article have been recorded, such as the Bidet found in the LANDING OF LAFAYETTE series by Clews.



The next form is a bit more conventional, as it is a lovely scalloped rim Loving Cup (I suppose it could also be a vase). It is 5 3/4" h x 10" d and is also the first time we've seen this with an American view.



The final piece is quite similar to the Loving Cup. It is a two-handled mug/tankard, which is 6" h x 10" d. Mugs/tankards with American views are extremely rare, as we only record one in LANDING OF LAFAYETTE, one in the Rose border series by Stubbs (CITY HALL, NY) and one in NAVAL HEROES by an Unknown Maker.



From Judie Siddall comes this huge dark blue foot bath by Clews or Adams in the FOLIAGE AND SCROLL BORDER series. According to Judie "it is 20" from handle to handle, 9" high and 14" wide." The view is MAXSTOKE CASTLE, WARWICKSHIRE, which is a heretofore unlisted view in this series. I believe this to be the only known example of a *dark blue* footbath.



To the left is a 2 7/8" h handled mug by Meigh from the AMERICAN CITIES AND SCENERY series. The view is NEW YORK FROM WEEHAWK.

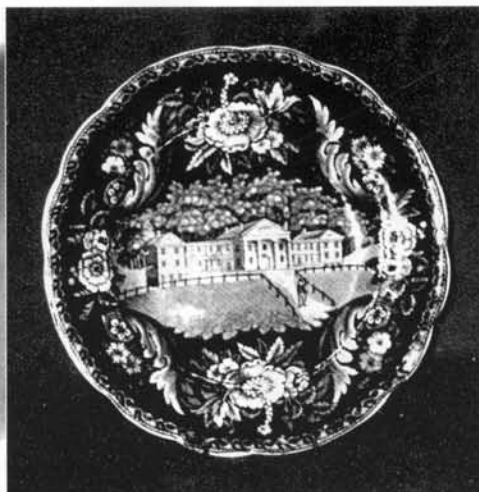
Finally, we have a 3" h earthenware handled mug with a carmine transfer of NEW YORK. This is identical to that transfer found on a tea service and two copper lustre pitchers in the collection of the Winterthur Museum.



Continued from Page 1 **Day Trip Prices**

The prices for day trip (those not staying at the New England Conference Center) is approximately \$250.00 per person. This includes dinner Friday night, with one speaker and welcoming activities. Breakfast, lunch and dinner Saturday, with the Annual Meeting, two speakers, the auction and individual activities. Also included is Sunday brunch, and the member show/buy. Firm prices are now being determined. If you are interested in joining us, on a day trip basis, please contact Norman Wolfe for reservations at (360) 336-5835. Time is short!

Historical Staffordshire & Rare Collectors Items



We specialize in Historical Staffordshire with American and English Views, Liverpool Pitchers of American Interest, Spatterware, Gaudy Dutch, Transferware, Anglo-American China and Currier & Ives Prints. We maintain a large inventory, so send us your want list. Check our website for show dates and locations, as well as locations of group shops where we maintain showcases filled with the above.



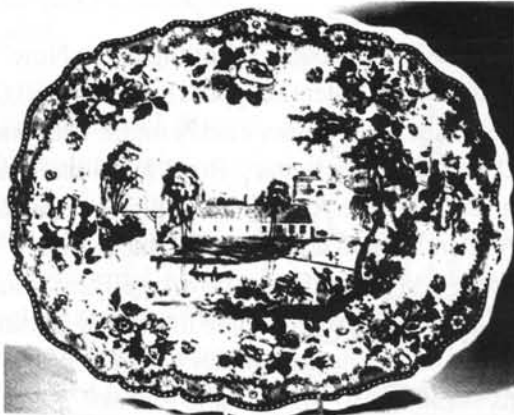
We run weekly auctions on Ebay© under the seller name *vette64*. Check us out on the web.



William & Teresa Kurau
P. O. Box 457, Lampeter, Pa 17537

(717) 464 - 0731 Fax (717) 464 - 0590

email: lampeter@epix.net
website: www.historicalchina.com



Merlin Antiques



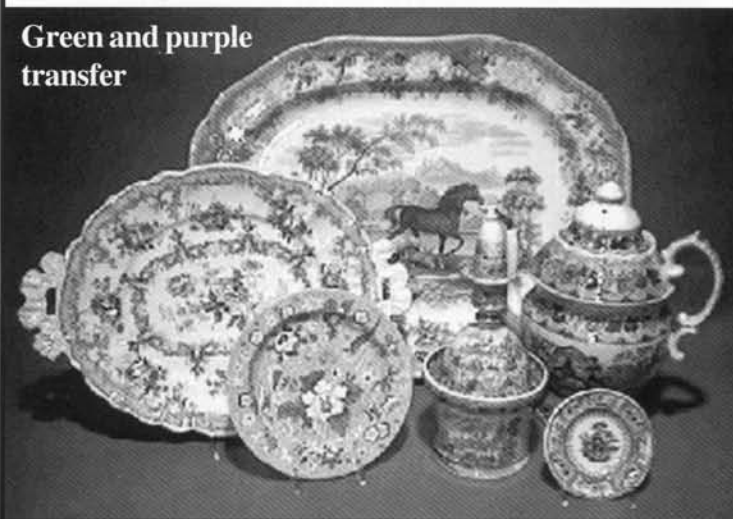
Merlin Antiques was established in 1990. Our specialty is blue and white transferware and other British pottery from 1770 to 1850. We also carry red, green, black and brown transferware, as well as Staffordshire figures, Lustreware, Prattware, Gaudy Welsh, advertising pot lids, creamware, and miscellaneous. In addition, we offer miniature portraits on ivory, patriotic flag embroideries, prints, and other complimentary antiques.

We are located in Palo Alto, California, 35 miles south of San Francisco. We are not a shop, but invite collectors to view our extensive stock, which is always on display, by appointment.

You can contact us at (650) 494-7920, or by e-mail at merlinbl@pacbell.net. Examples of our nearly 800 pieces of pottery can be found on our web site, www.merlinantiques.com.



Member T.C.C.



The Oakland Site

A David and Linda Arman
Antiques Website

www.oaklandpublications.com



Featuring

A New Reference Book on Historical Staffordshire and Liverpool published by David and Linda Arman through The Oakland Press.

Out of Print Reference Books on English Transferware and other subjects.

Priced Sales Results of recent Collector's Sales and Services Auctions of Transferware.

Ongoing Sales of current Collector's Sales and Services auctions of Transferware.

MEMBER
T.C.C.

Current Offerings of Reference Books

Larsen- *Am Hist Vws on Staff China*, Dover edition...\$95.00

Laidacker, *Anglo-Am China, I & II*...\$75.00 ea.

Armans, *Hist Staff + Supplement*, (while they last)...\$75.00 set

Barber, *Anglo-American China*, 1899 ed...\$75.00

Collard, *The Potters View of Canada*, Canadian Hist Vws on Staff...\$95.00

Willis & Bartlett, *American Scenery and Canadian Scenery*, reprints...\$175.00/\$150.00.

More.....

www.oaklandpublications.com

Historical China and related items

11" w platter,
WHITE
MOUNTAINS,
NH by Adams



Please
send
an SASE
for list

Richard G. Marden
P O Box 524
Wolfeboro, NH 03894
603-569-3209

MEMBER T. C. C.

Advertising Rates & Deadlines for the TCC Bulletin

Display Ads

Full Page - \$150

Half Page - \$80.00

Quarter Page - \$45.00

Classified Ads

\$.10 per word

Deadlines

(for both advertising and articles)

Issue mailed September 1, 2000.....August
12, 2000

Issue mailed December 1, 2000..... Novem-
ber 12, 2000

Issue mailed March 1, 2001.....February
10, 2001

Issue mailed June 1, 2001.....May 12, 2001
10, 2001

Collectors Sales & Services

P.O. Box 39

Pomfret Center, CT 06259

860-974-7008

Collectors Sales and Services is currently dispersing the Hambidge Collection of over 350 pieces of blue transferware. Sent for your catalogue yet?



Hey George! What's
Happening?



MEMBER
T.C.C.

*Blue & White Staffordshire
19th Century English China*

**DORA LANDEY
MAIN STREET CELLAR**

**120 Main Street, New Cannan, Ct 06840
(203) 966-8348**

**Monday thru Saturday 10-5
And By Appointment (914) 533-2643**

MEMBER T.C.C.

Flo Boo Staffordshire Plus



WE COLLECT DR. SYNTAX BY CLEWS AND GRAPEVINE
BORDER BY WOOD. ALWAYS INTERESTED IN HEARING
ABOUT ITEMS IN THESE SERIES FOR SALE.

WE SELL STAFFORDSHIRE TRANSFERWARE, STAFFORDSHIRE FIGURINES
PLUS ASSORTED ANTIQUES AND COLLECTIBLES.
THE ONLY PLACE YOU CAN FIND *Flo Boo*, IS ON EBAY! TO TAKE A
LOOK JUST GO TO WWW.EBAY.COM, CLICK
ON SEARCH AT THE TOP OF THE PAGE, UNDER SELLERS JUST TYPE IN
CLEWSMAN. NEW ITEMS LISTED ALMOST
EVERY DAY OF THE WEEK!

Norman Wolfe
Flo Boo
PMB 541
1500A E College Way
Mount Vernon, WA 98273-5637
1-360-336-5835
Email: floboo@pacifcrim.net

MEMBER T.C.C.

THE ANTIQUÉ TREASURY ON HISTORIC ANTIQUE ROW



Many Patterns, Colors, Shapes and Sizes

809 North Howard Street
Baltimore, MD 21201
In the Heart of Mt. Vernon-Baltimore's Cultural District

Shop Telephone
410-738-6363

E-mail
Allic11126@aol.com

Home Telephone
410-669-4206

Facsimile
410-669-4724

Member - T.C.C.

The Transferware Collector's Club First Annual Meeting

August 4 - 6, 2000

New England Conference Center - Durham, New Hampshire
(On the campus of the University of New Hampshire)

Featuring

Speakers - Carl Crossman - Pat Halfpenny - Michael Sacks
Local Events - Local Collections - Strawberry Banke Restoration - Antique Alley - Auctions
Annual Meeting with election of a new Board of Directors
Auction of member-owned transferware
Sale of transferware by member collectors and dealers
Gourmet breakfasts, lunches, brunch and dinners

Time Grows Short - Have You Made Your Reservations?

Contact: Norman Wolfe (360) 336-5835

~ Articles ~

ADDITIONAL READING

Part II

Norman Wolfe

Continued from the Spring, 2000 TCC Bulletin

Many people ask me what I mean when I say previously unrecorded or never before illustrated, when referring to patterns, views or even potters of transfer printed pottery. Below is an alphabetical partial list of related reading material to transferware. Many are out of print.

Keramic Studio, *Old China Magazine, Volume I*, October, 1901 to September, 1902, 12 issues, Keramic Studio Publishing Company, Syracuse, New York

Keramic Studio, *Old China Magazine, Volume II*, October, 1902 to September, 1903, 12 issues, Keramic Studio Publishing Company, Syracuse, New York

Keramic Studio, *Old China Magazine, Volume III*, October, 1903 to September, 1904, 12 issues, Keramic Studio Publishing Company, Syracuse, New York

Kowalsky, Arnold A. & Dorothy E., *Encyclopedia of Marks on American, English and European Earthenware, Ironstone and Stoneware, 1780-1980*, 1999, Schiffer Publishing, Ltd., Atglen, Pennsylvania

Laidacker, Sam, *The American Antiques Collector*, Volume I, February, 1939 to April/May, 1940, 10 issues, Scranton, Pennsylvania

Laidacker, Sam, *The American Antiques Collector*, Volume II June-August, 1940 to Summer, 1942, 10 issues, Scranton, Pennsylvania

Laidacker, Sam, *The American Antiques Collector*, Volume III, Winter, 1943 to ??, 9 issues, Scranton, Pennsylvania

Laidacker, Sam, *Anglo-American China, Part I*, 1954, Bristol, Pennsylvania

Laidacker, Sam, *Anglo-American China, Part II* 1951, Bristol, Pennsylvania

Laidacker, Sam, *The Standard Catalog of Anglo-American China, from 1810-1850*, 1938, Scranton, Pennsylvania.

Laidacker, Sam, *Auction Supplement to The Standard Catalog of Anglo-American China, from 1810-1850*, during the period from May, 1938 to June, 1944, 1944, Scranton, Pennsylvania.

Laidacker, Sam, *Auction Supplement to The Standard Catalog of Anglo-American China, for the Period, June, 1944 to January, 1949, 1949*, Bloomsburg, Pennsylvania.

Larsen, Ellouise Baker, *American Historical Views on Staffordshire China*, 1939, 1950 (E. B. Larsen) and 1975 (Dover)

Lehner, Lois, *Lehner's Encyclopedia of U.S. Marks on Pottery, Porcelain and Clay*, 1988, Collector Books, Paducah, Kentucky

Little, W. L., *Staffordshire Blue*, 1969, Crown Publishers, Inc., New York

Lockett, Terrence A. and Godden, Geoffrey A., *Davenport China, Earthenware & Glass, 1794-1887*, 1989, Barrie & Jenkins, London

May, John & Jennifer, *Commemorative Pottery, 1780-1900*, 1972, Charles Scribner's Sons, New York

Moore, N. Hudson, *The Old China Book*, 1903, Frederick A. Stokes Company, New York

Roberts, Gaye Blake, *Mason's, The First Two Hundred Years*, Merrill Holberton, London, England

Smith, Mabel Woods, *Anglo-American Historical China*, 1924, Robert O. Ballou, Chicago, Illinois

Snyder, Jeffrey B., *Historical Staffordshire, American Patriots & Views*, 1995, Schiffer Publishing, Ltd., Atglen, Pennsylvania

Snyder, Jeffrey B., *Romantic Staffordshire Ceramics*, 1997, Schiffer Publishing, Ltd., Atglen, Pennsylvania

Stefano, Frank, Jr., *Pictorial Souvenirs & Commemoratives of North America*, 1976, E. P. Dutton & Co., Inc., New York

Wedgwood, Josiah and Ormsbee, Thomas, H., *Staffordshire Pottery*, 1947, Robert M. McBride & Company, New York

Williams, Petra, *Flow Blue China, An Aid to Identification*, first published 1971, Fountain House East, Jeffersontown, Kentucky

Williams, Petra, *Flow Blue China II*, first Published 1973, Fountain House East, Jeffersontown, Kentucky

Williams, Petra, *Flow Blue China and Mulberry Ware*, first published 1975, Fountain House East, Jeffersontown, Kentucky

Williams, Petra with Weber, Marguerite R., *Staffordshire Romantic Transfer Patterns, Cup Plates and Early Victorian China*, first published 1978, Fountain House East, Jeffersontown, Kentucky

Williams, Petra and Weber, Marguerite R., *Staffordshire II, Romantic Transfer Patterns, Cup Plates and Early Victorian China*, first published 1986, Fountain House East, Jeffersontown, Kentucky

Williams, Petra and Weber, Marguerite R., *Staffordshire III, Romantic Transfer Patterns, Cup Plates and Early Victorian China*, 1998, Fountain House East, Jeffersontown, Kentucky

Williams, Sydney B., *Antique Blue and White Spode*, first published 1943, B. T. Batsford Ltd, London, England

Wood, Richard H. and Virginia A., *Historical China Cup Plates*, c1960, Baltimore, Maryland

I tried to only list those reference materials directly related to transfer printed pottery and porcelain.

The Richard Jordan Source Print

by Ken Kercheval

Editor's Note: I was recently contacted by Ken, who is known within the collecting fraternity as an ardent collector of the RICHARD JORDAN series. Ken not only has a large collection of the series, but also has a letter from the minister and his Journal.

Recently Ken obtained the source print for the transfer. As discussed in Larsen, *American Historical Views on Staffordshire China*, the print was drawn by William G. Mason, a Philadelphia engraver working in the years 1822 through 1845 and engraved by F. Kearney about 1836. The pottery was produced by Joseph Heath in Tunstall sometime after that, in all the colors found in light transferware.



A View of the residence of the late
RICHARD JORDAN
taken from America's Monthly Review
NEW BRUNSWICK

Ken states that he took the engraving to a photo lab and had it shot on an 8" x 10" negative, so nothing would be lost in reproducing it. He then sought out a paper with the same tones as the actual piece. He has reproduced the print and he states "the results are truly as good as it can get without having the actual print." Should anyone desire to purchase a copy of this source print, please contact Ken at 818-772-0333, FAX 818-772-2526 or Email at paris16@earthlink.net.

Staffordshire Toys and Miniatures from the American Market

David Arman

Some of the rarest forms found on dark blue Stafford-

shire, are those small objects made for the delight of children. Normally found in the form of tea services, full dinner services are known to have been made. The method we use to differentiate those items made for export to America and those made for domestic use is two fold. First, it is readily accepted that the very dark blue was made for export and secondly, there were a group of potters that seemed to have specialized in the American trade, so we assume those pieces made by them were meant for export. It is using these two criterion that we collected the following examples:



The group above are by the Clews Pottery. The platter and open vegetable were discussed in the last issue of the Bulletin. The little tureen is impressed CLEWS. Below, the tiny



plate on the right is a typical Clews Basket of Flowers transfer. It has an unusual impressed mark illustrated above, which is the usual Clew's crown within a circle, with CLEWS'S WARRANTED around the center. The normal Clews mark is CLEWS not CLEWS'S. The dark blue cup and saucer has an underglaze transfer DAVENPORT mark, identical with that illustrated on page 13 of the Winter, 1999 *T.C.C. Bulletin*.

On the following page we have illustrated a typical dark

blue toy Tea Service in the VILLAGE CHURCH pattern, which is known to have been made by the Clews Pottery.



The height of the teapot is 3 1/4" h. Directly below is another toy Tea Service in a dark blue "sheet" pattern. According to Coysh and Henrywood, writing in *The Dictionary of Blue and White Pottery, 1780 - 1880*, these all-over patterns allowed it to be used on various forms, without the need for several different engraved copper plates. They also state that these "sheet" patterns were used extensively on toy dinner services. In the foreground is a 7/8" h x 2 1/4" w *miniature* tureen base. We use the term "toy" to describe those Staffordshire items where the



Teapots are in the 3" h range, plates in the 2 1/4" d to 4" d and the platters from 3" w to 6" w. Miniatures, which are very uncommon, are significantly smaller. None of these



sheet pattern pieces have a maker's mark. The next light blue transfer Tea Service is by Ridgway in the COLUMBIAN STAR pattern, which was made for the 1840 Presidential Campaign of William Henry Harrison. Besides the toy Tea Service, this transfer is found on a full sized dinner service.

Below, we have illustrated a partial dinner service with a medium blue transfer that has been given the title by Coysh-Henrywood of the *Minton Miniature* series. While this was not made for export to America, it serves to illustrate the various forms found in the Toy Dinner Services. The length of the tiny ladle is only 3".

On the right, we have pictured a tiny 2 1/4" h pearlware Toy Pitcher with a black transfer of a sitting puppy. There are several variants of this, with different transfers of the many pets a child of this period might own.



Finally, we have illustrated two very rare light blue transfer services. The Tea Service below was manufactured by Charles Meigh and is from his AMERICAN



CITIES AND SCENERY SERIES. While the majority of the pieces are decorated only using this distinctive border, the saucers contain a transfer of UTICA, NEW YORK, taken from a William Bartlett engraving. These are unmarked. Finally, we have examples from an extensive Toy Dinner Service by Morely from his LAKE series, which consists of Canadian Views, also taken from William Bartlett engrav-



ings. The scene portrayed here is THE INDIAN ENCAMPMENT ON THE ST LAWRENCE. These particular pieces were all unmarked. Most of these Toys/miniatures are unlisted in the reference books available today and this is the first time many have ever been recorded or published. We invite the membership to share any little jewels in their collections for publication in the Bulletin.

DON'T SEE ARTICLES PERTAINING TO THE TYPE OF TRANSFERWARE YOU COLLECT? GET BUSY AND SEND US AN ARTICLE OR NEW DISCOVERY. THERE'S PROBABLY OTHER MEMBERS SHARING YOUR INTEREST. EDUCATE US ALL AND TELL WHAT DRAWS YOU TO A PARTICULAR TYPE OF TRANSFERWARE .

Dr. Syntax, Part III

Norman Wolfe

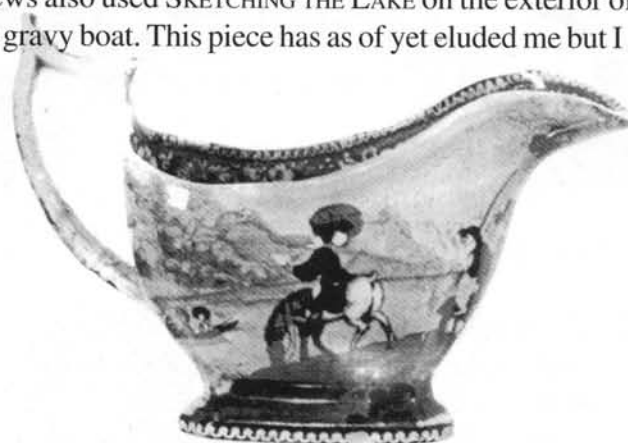
It is always difficult to choose the next view I will cover. How about "DOCTOR SYNTAX SKETCHING THE LAKE"? This is a rather uncommon view, as it was not produced on very many pieces. The source print shows the whole story.



Ever try to find the matching ladle to your tureen? They seem to always be missing. Quite a find in any condition, this one is perfect. I was fortunate in that I found a sauce tureen, lid, undertray and ladle, all intact. For years this had been the only example I have ever seen. Recently there were two sauce tureen ladles with this view for sale together. A rare find indeed for whomever was lucky enough to get them!



Clews also used SKETCHING THE LAKE on the exterior of the gravy boat. This piece has as of yet eluded me but I



believe the Editor has a photo. Hollow body pieces have gained in popularity in recent years. Unfortunately they have a low survival rate due to breakage.

Next I have a very unique dinner plate. It shows DOCTOR SYNTAX DISPUTING HIS BILL WITH THE LANDLADY in the central view plus BOUND TO A TREE BY HIGHWAYMEN and SKETCHING THE LAKE alternating in the border. This rare plate is illustrated in *Old China Magazine*, November 1901, page 23. Microscopic examination has proven that my plate and the one illustrated in OLD CHINA MAGAZINE are one in the same. No other example of this plate has ever been photographed and it is possibly the only one. Two other borders are known with this same central view. They are illustrated on the cover of OLD CHINA MAGAZINE, June 1903. It has been speculated that these were test pieces to try out different borders. They may have



“SYNTAX SKETCHING THE LAKE” is printed on the front, otherwise unmarked.

Next issue we'll have another view from my favorite series, “DOCTOR SYNTAX”.



also been special order items for a customer.

The last example of this view I have is on a child's plate, embossed floral rim, 6 1/2" D, single undercut foot rim characteristic of early potting, brown transfer, painted with blue, green, yellow and orange, heavy pearlware glaze,

MASON'S? VISTA

Norman Wolfe

I am sure we have all seen examples of the MASON'S VISTA pattern in Red, Brown and Blue. This pattern is probably more popular today than ever before. This mark usually comes with the "PATENT IRONSTONE CHINA" mark that we all know so well. These are of course by G. L. Ashworth & Bros. and were produced from the 1890s into the 20th Century.

Through years of research I have come to the conclusion



that none of the Masons ever produced a VISTA pattern. To understand this we must look at the history of the factory. In 1848 Charles James Mason went bankrupt. Francis Morley privately purchased everything involved with the factory. Nothing ever made it to auction. Even the right to use the Mason's name and the expired patent on ironstone china was purchased by Morley.

Francis Morley was the son-in-law of William Ridgway. He operated the Broad Street pottery in Shelton, Hanley, Staffordshire from c1845-58. During this period he introduced the "VISTA" pattern illustrated here in brown transfer. The backstamp shows "VISTA" in a cartouche with "F. M." below. In 1858 Morley took on a partner, George L. Ashworth. In 1862 Morley retired and the pottery became G. L. Ashworth & Bros. Through this chain of events we can see how and why Ashworth used the Masons logo. The Mason's name and curtain mark was used to promote sales through name recognition.

Just keep in mind that "Mason's Vista" is just a pattern name and not the origin of the pattern. "Ashworth's Vista" or "Morley's Vista" would probably be more accurate. I am sure these names would not have sold as much ironstone china as "Mason's Vista".

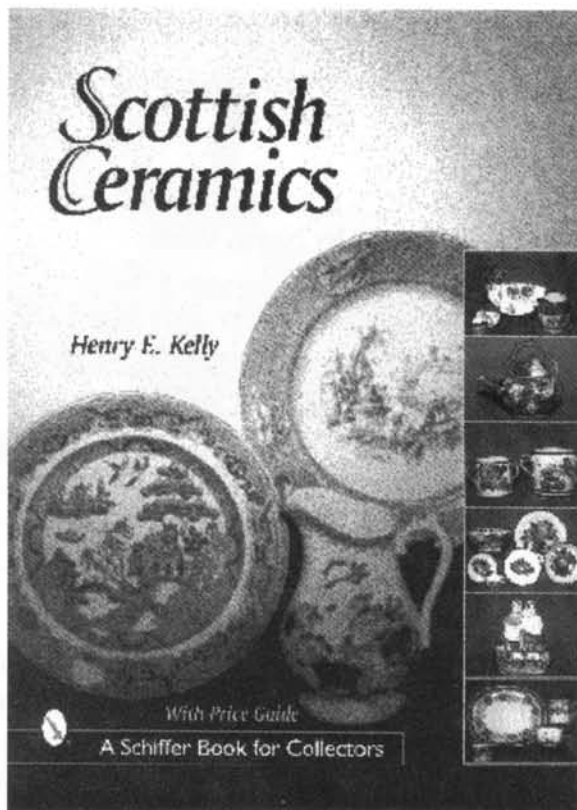
I do not expect the die-hard Mason's Vista collectors to believe a word of this. Trust me, would I lie to you?

Book Review

Scottish Ceramics by H. Kelly (another view)

Kay Dickson

This new publication is useful for beginners and non-specialist antiques dealers as although produced by amateurs, it contains many pictures which help to identify wares previously thought to belong to Staffordshire. Mr. Kelly is good at cataloguing, and this book lists many wares and places them in their correct factories. The photographs are the work of Mr. Douglas Leishman and are quite adequate for identification purposes. Sadly however the text is not. There are many glaring errors and even more glaring omissions. There is very little mention of pre-Victorian ware, but of the Victorian ware, one or two of the Glasgow Potteries are well represented. Sadly a



book of this standard does a lot of damage, and one is left wondering if the publisher has had a change of management. In my view Schiffer used to produce books of a much higher calibre. Who did they get to check the information and why was a title so encompassing chosen for such a limited volume? This book is overpriced and under-edited.

For those who want to know more about early Scottish produce I recommend the two chapters on West Pans in the Mint Museum of Art publication "*William Littler An English Earth Potter 1724-1784*" which is an account of the proceedings of a seminar held in North Carolina in 1998. This is an excellent but inexpensive booklet as is another excellent publication with two chapters on West Pans Porcelain - "*Digging for Early Porcelain*" from the City Museum and Art Gallery Stoke on Trent. The omission of the produce of the early Glasgow factories is absolutely indefensible. There is however an excellent booklet available from the Kelvingrove Art Gallery and Museum on the Delftfield factory while the Mitchell Library also in Glasgow is able to photocopy Gerry Quail's booklet on the Caledonian Factory. Sadly Graeme Cruikshank's volume on Scottish Pottery in the Shire series is out of print. It is an accurate but necessarily brief introduction to Scottish Ceramics. All these three volumes cost only a few dollars - under \$5 each.

~ Feedback ~

Comments from our membership concerning previous articles:

Winter, 1999

“On the Road” article by Norm Wolfe

From Ellen Hill: the unidentified “pot” on page 5, bottom left is used to keep gravy warm. Hot water is poured in the outer chamber. The pattern is ARGYLL (see page 24, *Dictionary of Wedgwood* by Reilly and Savage).

“New Discoveries”

Also from Ellen Hill, stating the Tyndale & Mitchell Importer’s Mark is known on a teapot - LADY PEEL pattern by F. Morely in a mulberry transfer.

Spring, 2000

“New Discoveries” page 14 (the openwork basket and tray illustrated in the upper right column)



From Lucille Gaignault a photo of a 10”d soup plate with the same border and same mark on the reverse, but with an R S and possibly an indistinguishable W, for Ralph Stevenson or Ralph Stevenson & William. also impressed STEVENSON. I have also illustrated not only this soup, but a 13”d handled undertray with the same view and the same underglaze mark, without the R.S. mark.



“New Discoveries” page 14 - 16 (Leaf/Shell Dishes)

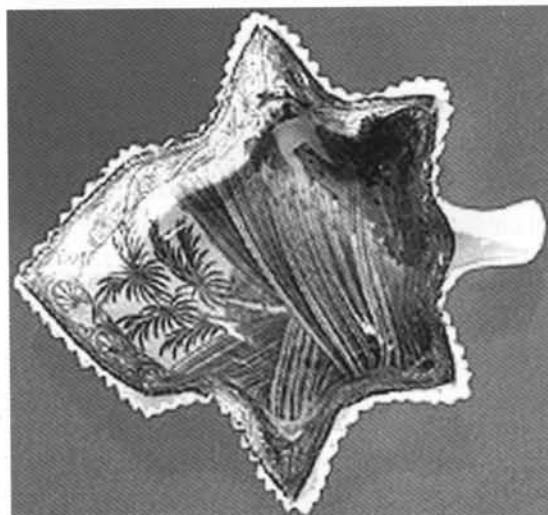


From Lucille Gaignault a 13cm x 12cm Shell Dish in the CATTLE & RIVER pattern by Charles Heathcote & Company.

From Gene Fleischer, another relish dish from the rare ACORN AND OAK LEAF border series by R. Stevenson with a dark blue transfer of ST. PAUL’S CHAPEL, NEW YORK.



From Arnold Johnson another leaf dish from a rare Indian Sporting series, which will be discussed by Arnold and your editor in the Fall, 2000 issue of the Bulletin.



This is decorated with snippets of the main transfer.

On the following page we have two more examples

from our own collection. The first is by Rogers from his popular FALLOW DEER pattern. This is unmarked. The last Leaf dish illustrated is a view I have not yet identified with a lovely floral border. To the far left, barely seen, is a woman. Any help identifying this would be appreciated.

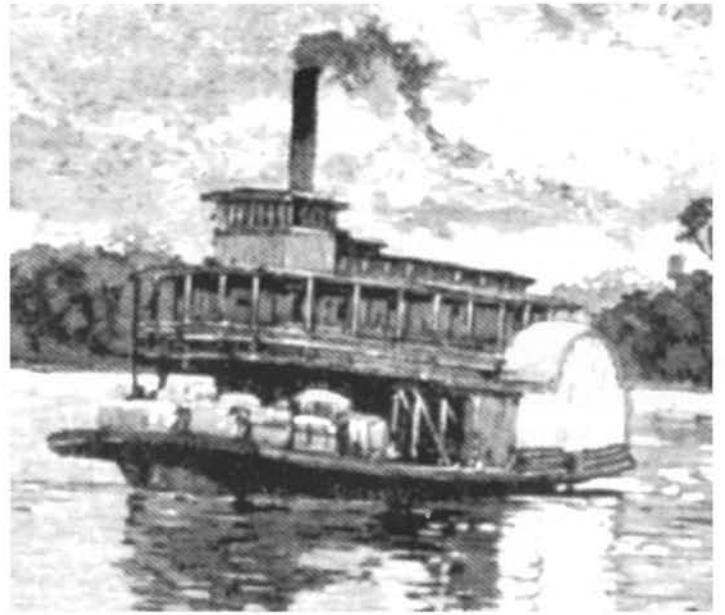


Winter, 1999

“Arabia & Transferware” by David Arman

From Ellen Hill: “I was most intrigued to read the article on the steamboat ARABIA in the TCC BULLETIN #2. I got in touch with friends in the Kansas City area, who visited the museum and sent me a brochure. Later, I purchased two books from the museum; both authors were part of the team who did the excavating and are now involved in running the museum. The first book, “*The Treasures of the Steamboat Arabia*”, by Dave Hawley, is an overview of the steamboat, the steam era, the Missouri River, the “dig”, the contents, etc. One fascinating map showed the sites of 193 steamboat wrecks along the river from St. Louis to Kansas City. Most of the ship-wrecks dated between 1821 and 1900, with a few in the first decades of the 20th century.

The second book, “*Treasure in a Cornfield*”, by Greg



Hawley, describes the discovery and excavation of the steamboat ARABIA and gives great details about her over 200 tons of cargo. The book contains an Artifact Inventory of all items recovered from the steamboat. The ironstone china listed was contained in two oak barrels, each two feet in diameter at the top, the dishes were packed in straw--there were 178 pieces in one barrel and 239 pieces in the other.

The photos in the second book showed white ironstone, a mulberry transfer basin & ewer in CYPRUS by Davenport and some pieces in light blue transfer which were FRIBURG by Davenport. The inventory list was not completely clear, so I called the museum and talked with the curator, Greg Hawley. Here is a list of the ironstone dishes found:

- Mulberry
- transfer - CYPRUS by Wm Davenport - c1848
- 2 basins & ewers
- 1 cream pitcher
- Light blue transfer - FRIBURG by Wm Davenport - c1848
- 2 bowls, bowl & lid (octagonal cov. veg)
- 2 pitchers
- 14 plates
- 14 sauce dishes
- 9 saucers

There was a quantity of blue shell edge dishes mostly marked Davenport. The remainder was White Ironstone by: Davenport, J Wedg Wood, C Meigh & Son, T.